

BRITISH VIRGIN ISLANDS

TOURISM HIGHLIGHTS FOR 2006

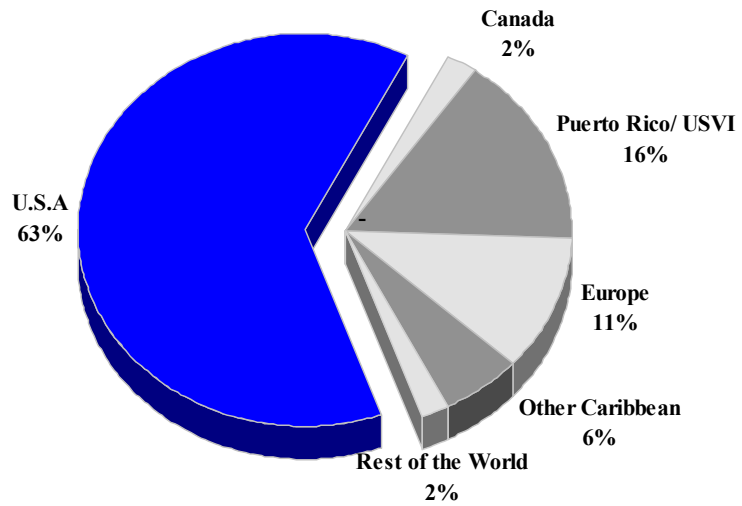
VISITOR ARRIVALS			
Tourist Arrivals ✈	356,271	Cruise Passengers	473,987
➔ <i>Summer</i>	58.1%	➔ <i>Summer</i>	40.7%
➔ <i>Winter</i>	41.9%	➔ <i>Winter</i>	59.3%
Same day visitors		Cruise Ship calls	n.a
VISITOR PROFILE			
Average Length of Stay (<i>nights</i>)	n.a	Tourist Arrivals by Place of Stay^{II}	
		➔ <i>Hotels</i>	n.a
Tourist Arrivals by Purpose of Visit^{II}		➔ <i>Charter Boats</i>	n.a
➔ <i>Holiday</i>	n.a	➔ <i>Private</i>	n.a
➔ <i>Business</i>	n.a	➔ <i>Other Accommodation</i>	n.a
➔ <i>Other</i>	n.a		
TOURISM AND OTHER RELATED ECONOMIC STATISTICS			
Visitor Expenditure (<i>US\$ millions</i>)	\$392.7	Tourism Budget (<i>US\$ thousands</i>) ^{IV}	\$4,115
Hotel and Restaurant contribution to GDP ^I	16.0%	GDP at Factor Cost (<i>US\$ millions</i>)	\$879.0
		Consumer Price Index (<i>%ch. 2004/'03</i>)	1.0%
ACCOMMODATION STATISTICS		SOCIO-ECONOMIC STATISTICS	
Rooms	1,869	Land Area (<i>square Kilometres</i>)	150
Room Occupancy Rates *	83.4%	Population (<i>thousand mid year 2004</i>)	21.7

* Development Planning Unit estimate

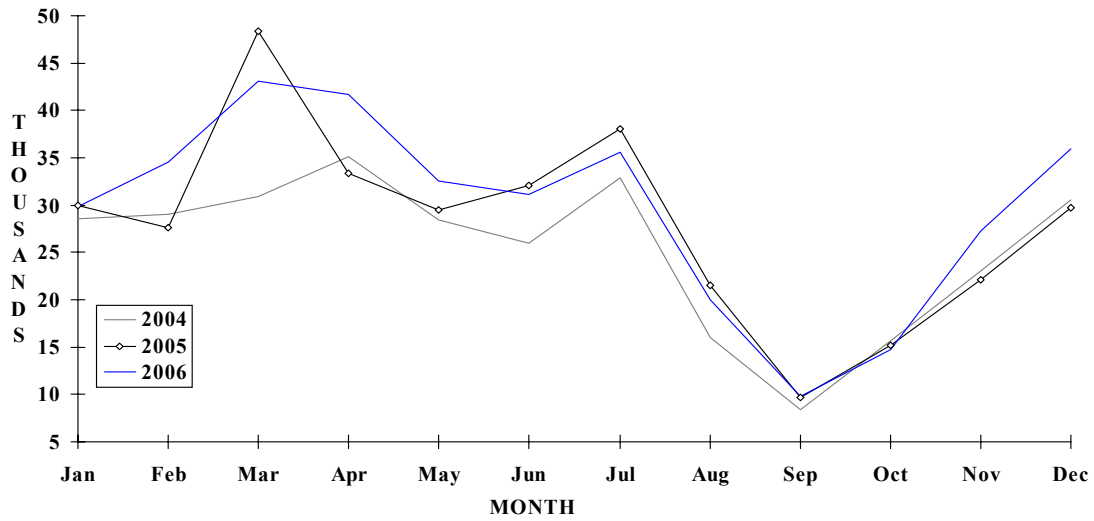
BRITISH VIRGIN ISLANDS

TOURIST ARRIVALS BY MAIN MARKETS

2004^e



MONTHLY TOURIST ARRIVALS



BRITISH VIRGIN ISLANDS

TOURIST ARRIVALS BY COUNTRY OF RESIDENCE

Country of Residence	2002	2003	2004	2005	% Share	
					2006	2006
United States	179876	198963	191624	n.a	n.a	n.a
Canada	6307	8206	7453	n.a	n.a	n.a
Europe	28765	37386	33942	n.a	n.a	n.a
Puerto Rico/USVI	45012	49215	47973	n.a	n.a	n.a
Other Caribbean	17417	17662	17678	n.a	n.a	n.a
South America	1276	2372	2092	n.a	n.a	n.a
Other	3043	3954	3757	n.a	n.a	n.a
TOTAL	281696	317758	304519	0	0	-

MONTHLY TOURIST ARRIVALS

Month	2002	2003	2004	2005	% Change	
					2006	2006/05
January	26186	28776	28522	30004	29849	-0.5
February	29443	37648	28974	27564	34533	25.3
March	40178	37972	30931	48315	43140	-10.7
April	24440	36660	35115	33341	41703	25.1
May	24804	26166	28402	29510	32486	10.1
June	24859	24769	25977	32057	31171	-2.8
July	25462	28275	32895	38047	35565	-6.5
August	15285	19180	16012	21518	20027	-6.9
September	6638	6587	8400	9725	9815	0.9
October	12189	14627	15713	15137	14725	-2.7
November	23696	22772	23007	22146	27320	23.4
December	28516	34326	30570	29771	35937	20.7
TOTAL	281696	317758	304518	337135	356271	5.7

BRITISH VIRGIN ISLANDS

TOURIST ARRIVALS BY TYPE OF ACCOMMODATION

Place of Stay	2002	2003	2004	2005	2006	% Share 2006
Hotel	57085	60299	85096	94447		??
Rented Accom.	22463	23691	27549	30576		??
Own Home/Friends	27301	21517	23727	26331		??
Charter Boats	174847	212251	167384	185778		??
TOTAL	281696	317758	303756	337132	0	0.0

CRUISE PASSENGER ARRIVALS

Month	2002	2003	2004	2005	2006	% Change 2006/05
January	41244	37185	72546	67886	98315	44.8
February	29558	38214	63665	60291	67262	11.6
March	33498	49338	72994	63043	64620	2.5
April	31915	42833	44111	40194	50971	26.8
May	7711	7059	16922	15558	13534	-13.0
June	5365	11544	13056	13754	11823	-14.0
July	6279	7510	14383	14440	12643	-12.4
August	4222	12620	11088	14366	15226	6.0
September	1707	2875	11411	10492	10792	2.9
October	7714	17342	20658	29092	22966	-21.1
November	19268	37879	52273	52009	43478	-16.4
December	41586	39939	73494	68027	62357	-8.3
Total	230067	304338	466601	449152	473987	5.5
Cruise ship calls	256	330	n.a	n.a	n.a	
Charter yachts	860	875	863	869	n.a	

TOURIST ACCOMMODATION (Rooms on land)

Area	2002	2003	2004	2005	2006
Hotels	1314	1318	1370	1180	
Guest Houses/Apartments	493	497	499	590	
TOTAL	1807	1815	1869	1770	0

Source: Development Planning Unit - British Virgin Islands

CAYMAN ISLANDS

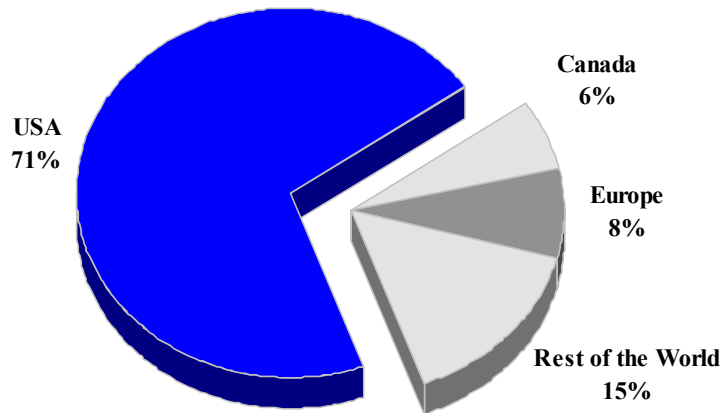
TOURISM HIGHLIGHTS FOR 2006

VISITOR ARRIVALS			
Tourist Arrivals ➔	267,257	Cruise Passengers	1,930,136
➔ <i>Summer</i>	60.7%	➔ <i>Summer</i>	56.0%
➔ <i>Winter</i>	39.3%	➔ <i>Winter</i>	44.0%
		Cruise Ship calls	784
VISITOR PROFILE			
Average Length of Stay (<i>nights</i>)		Tourist Arrivals by Place of Stay¹	
Tourist Arrivals by Purpose of Visit¹		➔ <i>Hotels</i>	40.4%
➔ <i>Holiday</i>	70.4%	➔ <i>Guest Houses/Apartments</i>	16.9%
➔ <i>Business</i>	7.3%	➔ <i>Private homes</i>	21.6%
➔ <i>Other</i>	22.3%	➔ <i>Other</i>	21.1%
TOURISM AND OTHER RELATED ECONOMIC STATISTICS			
Visitor Expenditure (<i>US\$ millions</i>)	\$607.0	GDP at Market Prices (<i>US\$ millions</i>) ¹	\$2,004.0
Tourism Budget (<i>US\$ thousands</i>) ¹¹	\$21,487	Consumer Price Index (% <i>ch. 2004/'03</i>)	4.4%
ACCOMMODATION STATISTICS		SOCIO-ECONOMIC STATISTICS	
Rooms ¹¹	5,238	Land Area (<i>square Kilometres</i>)	260
Room Occupancy Rates - <i>Hotel</i>	61.7%	Population (<i>thousand mid year 2003</i>)	43.6
- <i>Non-hotel</i> **	43.1%		

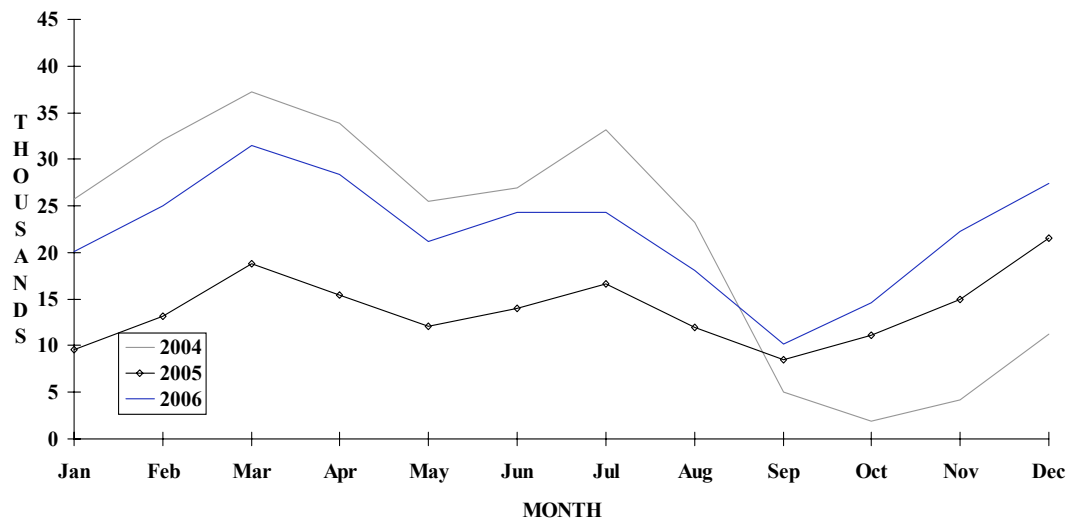
** Includes apartments, condos, guesthouses, villas and bed & breakfast accommodations.

CAYMAN ISLANDS

TOURIST ARRIVALS BY MAIN MARKETS 2005



MONTHLY TOURIST ARRIVALS



TOURIST ARRIVALS BY COUNTRY OF RESIDENCE

Country of Residence	2002	2003	2004	2005	% Share	
					2006	2006
United States	244862	232413	205206	118843		??
Canada	13569	14125	12116	10480		??
United Kingdom	13691	14115	12182	9991		??
Other Europe	4191	4099	3095	2725		??
Jamaica	15544	18639	18306	17005		??
Other Caribbean *	3436	3261	3231	3211		??
Rest of World	7504	6863	5793	5546		??
TOTAL	345000	293515	259929	167801	0	??

* Includes Costa Rica

MONTHLY TOURIST ARRIVALS

Month	2002	2003	2004	2005	% Change	
					2006	2006/05
January	24545	24725	25689	9601	20163	110.0
February	28608	28270	32022	13202	25004	89.4
March	39378	34421	3248	18810	31493	67.4
April	26768	27807	33903	15423	28403	84.2
May	23229	20909	25502	12061	21172	75.5
June	27017	24662	26890	14008	24251	73.1
July	28844	26491	33118	16610	24256	46.0
August	23961	22422	23191	11917	18064	51.6
September	11333	11336	4982	8494	10155	19.6
October	16151	18879	1968	11104	14634	31.8
November	23903	22745	4215	14979	22276	48.7
December	29060	30848	11201	21592	27386	26.8
TOTAL	345000	293515	225929	167801	267257	59.3

CRUISE PASSENGER ARRIVALS

Month	2002	2003	2004	2005	% Change	
					2006	2006/05
January	156371	180915	207411	170961	211678	23.8
February	142563	171848	192840	201761	180675	-10.5
March	158156	171629	230840	252586	253124	0.2
April	143649	178249	190631	166289	182790	9.9
May	127425	111645	118514	126530	112374	-11.2
June	121301	116292	128390	110633	112190	1.4
July	137742	132933	122967	86539	122781	41.9
August	126643	111875	119367	122562	144179	17.6
September	69328	113258	41596	118466	110971	-6.3
October	88328	159589	0	65651	128754	-
November	130113	163955	149456	176587	160373	-9.2
December	173131	206791	191281	200434	210247	4.9
TOTAL	1574750	1818979	1693293	1798999	1930136	7.3
Cruise ship calls	612	731	830	732	784	

TOURIST ACCOMMODATION (Rooms)

Type of Accommodation	2002	2003	2004	2005	2006
Hotels	2712	2473	n.a	n.a	
Apts./Cottages	-	n.a	n.a	n.a	
Guest Houses	-	n.a	n.a	n.a	
Other	2526	2635	n.a	n.a	
TOTAL	5238	5108	0	n.a	n.a

* Closure of Holiday Inn and conversion of Royal Pavilion to office use were mainly responsible for room reduction in 1998

** Includes Apartments, Guesthouses, Villas & Condos

Source: Department of Tourism, Cayman Islands

CUBA

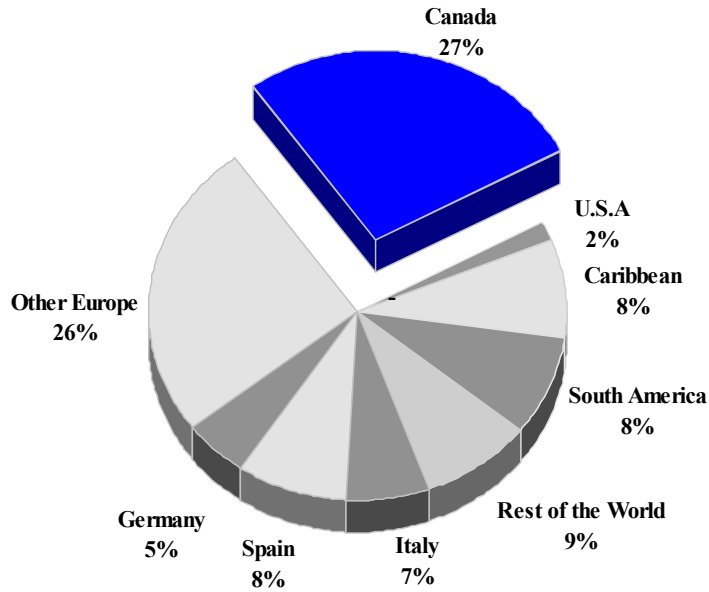
TOURISM HIGHLIGHTS FOR 2006

VISITOR ARRIVALS			
Tourist Arrivals ✈	2,220,567	Cruise Passengers	<u>NOT AVAILABLE</u>
➔ Summer	56.0%		
➔ Winter	44.0%		
VISITOR PROFILE			
Average Length of Stay (<i>nights</i>) ¹	10.5	Tourist Arrivals by Purpose of Visit	
		➔ <i>Holiday</i>	89.8%
		➔ <i>Business</i>	0.6%
		➔ <i>Other</i>	9.6%
TOURISM AND OTHER RELATED ECONOMIC STATISTICS			
Total Expenditure (<i>US\$ millions</i>)	\$2,113.6	GDP at Factor Cost (<i>US\$ millions</i>) ^{1#}	\$28,393.1
		Hotel and Restaurant contribution to GDP ¹	28.8%
ACCOMMODATION STATISTICS		SOCIO-ECONOMIC STATISTICS	
Rooms	45,270	Land Area (<i>square Kilometres</i>)	110,860
Room Occupancy Rates	63.5%	Population (<i>thousand mid year 2004</i>)	11,235.7

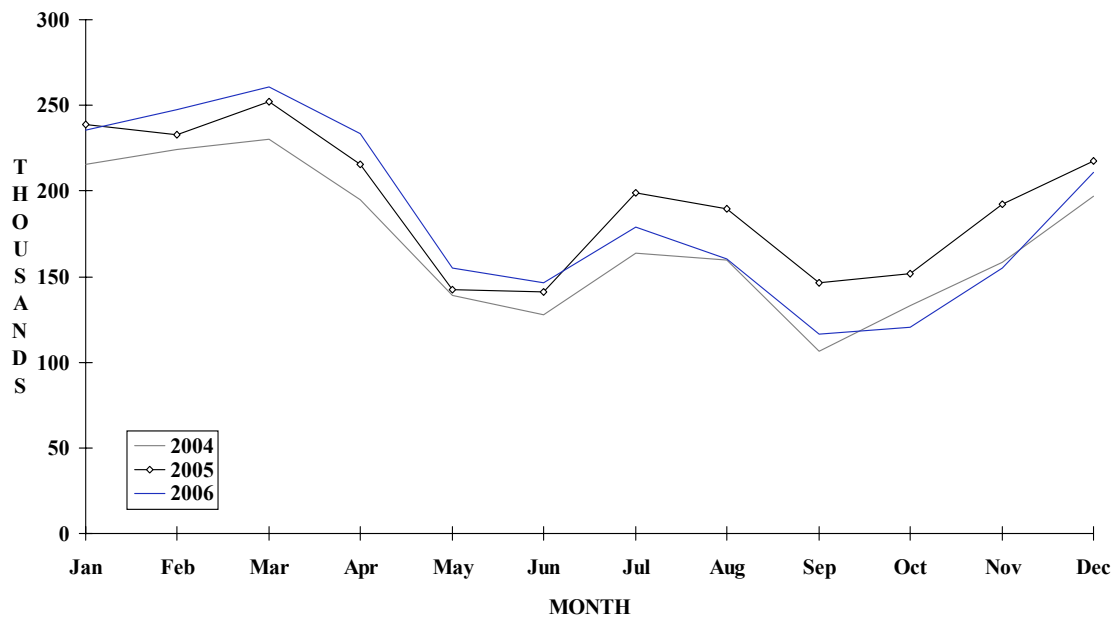
[#] Figure used is Gross Social Product

CUBA

**TOURIST ARRIVALS BY MAIN MARKETS
2006**



MONTHLY TOURIST ARRIVALS



CUBA

TOURIST ARRIVALS BY COUNTRY OF RESIDENCE*

Country of Residence	2002	2003	2004	2005	2006	% Share 2006
United States	77646	84529	49856	37233	36808	1.7
Canada	348468	452438	563371	602377	604263	27.2
Italy	147750	177627	178570	169317	144249	6.5
Spain	138609	127666	146236	194103	185531	8.4
Germany	152662	157721	143644	124527	114292	5.1
Other Europe	420108	479038	508277	559722	569201	25.6
South America	72507	78831	163206	280827	186140	8.4
Caribbean	180251	191594	144861	176455	187577	8.4
Other	148161	156238	150551	174773	192506	8.7
Total	1686162	1905682	2048572	2319334	2220567	100.0

* Includes same-day visitors

° Includes Central America

MONTHLY TOURIST ARRIVALS

Month	2002	2003	2004	2005	2006	% Change 2006/05
January	140792	190669	215727	238729	235500	-1.4
February	161114	191650	223946	232938	247475	6.2
March	199723	212441	229905	252009	260446	3.3
April	143478	179104	194959	215757	233259	8.1
May	111491	118759	138708	142354	155132	9.0
June	111153	113949	127458	140868	146413	3.9
July	140167	148650	163488	199129	178758	-10.2
August	139544	161345	159642	189692	160456	-15.4
September	101121	107450	106619	146286	116421	-20.4
October	107340	121834	132915	151782	120506	-20.6
November	138911	155884	158212	192491	155142	-19.4
December	191328	203947	196993	217299	211059	-2.9
TOTAL	1686162	1905682	2048572	2319334	2220567	-4.3

TOURIST ACCOMMODATION (Rooms)

Category	2002	2003	2004	2005	2006
2-Star	3650	4046	4099	4158	
3-Star	7369	7556	7590	7698	
4-Star	15976	17006	18247	17971	
5-Star	7482	8076	8106	8458	
Other*	6846	7012	7228	7359	
TOTAL	41323	43696	45270	45644	0

Source: National Institute of Tourism (Intur), Cuba

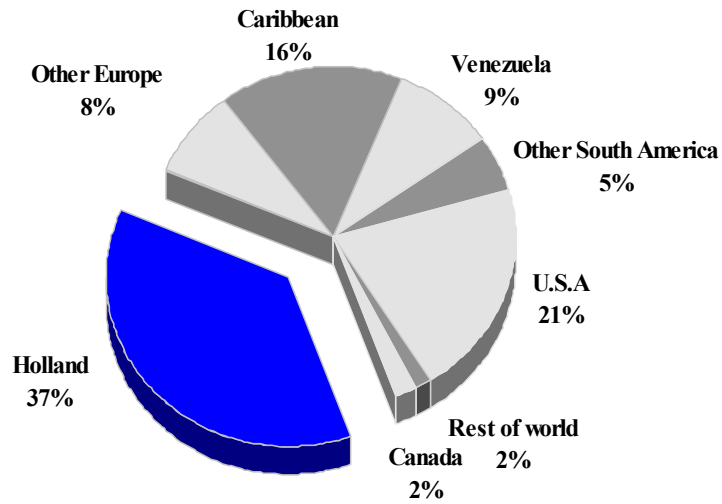
CURACAO

TOURISM HIGHLIGHTS FOR 2006

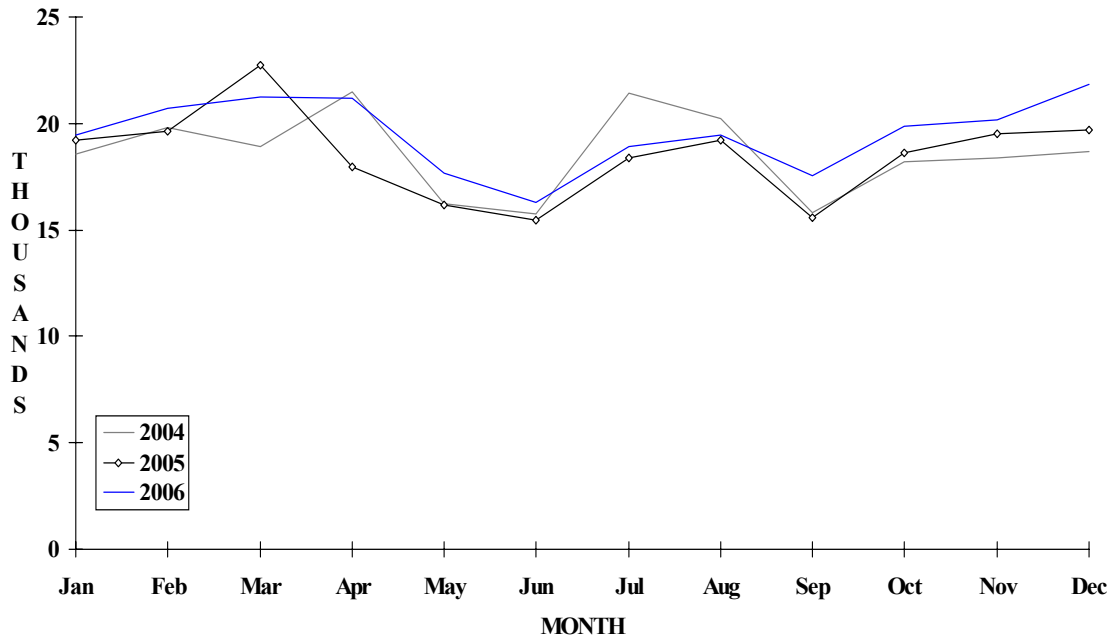
VISITOR ARRIVALS			
Tourist Arrivals ✈	234,383	Cruise Passengers	321,551
➔ <i>Summer</i>	64.8%	➔ <i>Summer</i>	52.1%
➔ <i>Winter</i>	35.2%	➔ <i>Winter</i>	47.9%
		Cruise Ship calls	205
VISITOR PROFILE			
Average Length of Stay (<i>nights</i>)	n.a	Tourist Arrivals by Place of Stay	
Tourist Arrivals by Purpose of Visit		➔ <i>Hotels</i>	n.a
➔ <i>Holiday</i>	n.a	➔ <i>Guest Houses/Apartments</i>	n.a
➔ <i>Business</i>	n.a	➔ <i>Private</i>	n.a
➔ <i>Other</i>	n.a	➔ <i>Other</i>	n.a
TOURISM AND OTHER RELATED ECONOMIC STATISTICS			
Total Expenditure (<i>US\$ millions</i>)	\$295.8	Consumer Price Index (<i>% ch. 2004/'03</i>)	1.4%
Tourism Budget (<i>US\$ thousands</i>) ^{IV}	\$9,343		
ACCOMMODATION STATISTICS		SOCIO-ECONOMIC STATISTICS	
Rooms	3,444	Land Area (<i>square Kilometres</i>)	444
Room Occupancy Rates	69.3%	Population (<i>thousand mid year 2004</i>)	133.4

CURACAO

TOURIST ARRIVALS BY MAIN MARKETS 2006



MONTHLY TOURIST ARRIVALS



CURACAO

TOURIST ARRIVALS BY COUNTRY OF RESIDENCE

Country of Residence	2002	2003	2004	2005	2006	% Share 2006
United States	38947	40019	43105	45563	47428	20.2
Canada	1956	3786	4101	5223	7422	3.2
Holland	55256	75999	73798	77879	85246	36.4
Other Europe	15134	15385	15954	17078	18986	8.1
Dominican Republic	8620	7009	6435	4639	3366	1.4
Aruba	11989	12561	13102	10702	12729	5.4
Haiti	5491	4836	2924	1832	1697	0.7
Puerto Rico	1287	1127	1188	963	1249	0.5
Other C'bean*	23090	21798	21648	20030	18893	8.1
Venezuela	30389	25099	27639	24259	21446	9.2
Other South America**	19237	9559	8731	10168	12291	5.2
Rest of World	6567	4217	4814	3737	3630	1.5
TOTAL	217963	221395	223439	222073	234383	100.0

*Excludes residents of Netherlands Antilles

**Includes Suriname from 1994-1995

MONTHLY TOURIST ARRIVALS

Month	2002	2003	2004	2005	2006	% Change 2006/05
January	18723	17714	18539	19209	19479	1.4
February	18549	17869	19810	19628	20698	5.5
March	20196	17394	18930	22721	21251	-6.5
April	19632	19467	21498	17930	21166	18.0
May	15830	15400	16223	16150	17675	9.4
June	15281	16011	15745	15440	16259	5.3
July	18195	20949	21446	18398	18940	2.9
August	19340	18742	20242	19215	19467	1.3
September	16053	17109	15815	15578	17556	12.7
October	17678	20909	18178	18591	19873	6.9
November	18721	19260	18352	19517	20187	3.4
December	19765	20571	18661	19692	21832	10.9
TOTAL	217963	221395	223439	222069	234383	5.5

CRUISE PASSENGER ARRIVALS

Month	2002	2003	2004	2005	2006	% Change 2006/05
January	58196	48617	27218	45543	46342	1.8
February	48222	35433	20177	31775	36089	13.6
March	46990	41179	31174	34933	47695	36.5
April	44952	31492	15739	21107	23810	12.8
May	6933	10760	3794	9674	13509	39.6
June	7187	7721	2717	8293	7082	-14.6
July	10896	10723	7954	8322	7621	-8.4
August	7528	7242	7680	10509	11816	12.4
September	7159	7605	6679	7279	7642	5.0
October	12515	16917	11725	16182	22602	39.7
November	28899	29287	34762	44369	48971	10.4
December	38901	32402	49766	38231	48372	26.5
TOTAL	318378	279378	219385	276217	321551	16.4

Number of Calls 184

TOURIST ACCOMMODATION (Rooms)

Type of Accommodation	2002	2003	2004	2005	2006
Hotels	2957	n.a	n.a	n.a	
Apartments	260	n.a	n.a	n.a	
Villas/Cottages	-	n.a	n.a	n.a	
Guest Houses	21	n.a	n.a	n.a	
Other	-	n.a	n.a	n.a	
TOTAL	2768	0	3369	3444	

Source: Curacao Tourism Development Bureau

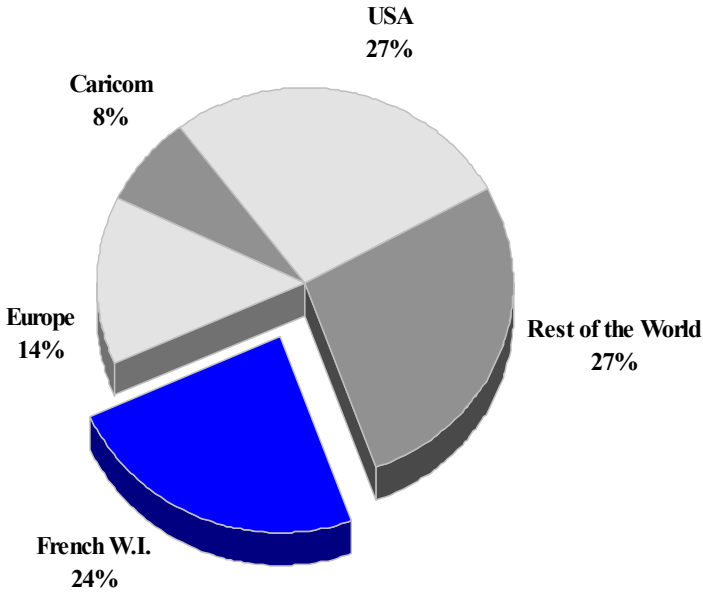
DOMINICA

TOURISM HIGHLIGHTS FOR 2006

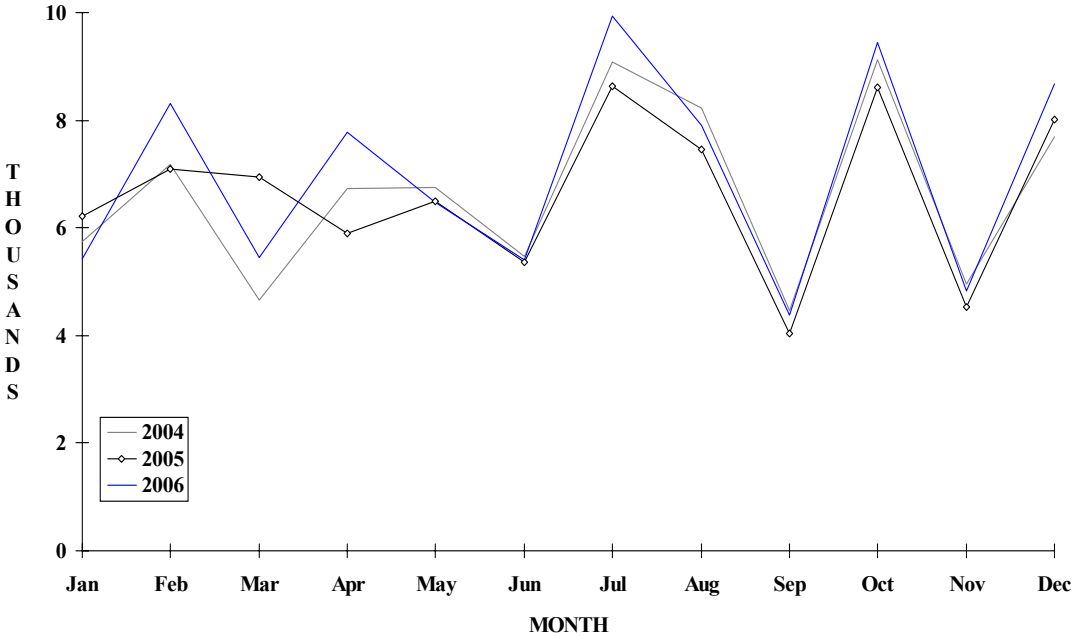
VISITOR ARRIVALS			
Tourist Arrivals ➔	84,041	Cruise Passengers	301,511
➔ <i>Summer</i>	69.7%	➔ <i>Summer</i>	54.6%
➔ <i>Winter</i>	30.3%	➔ <i>Winter</i>	45.4%
		Cruise Ship Calls	299
VISITOR PROFILE			
Average Length of Stay (<i>nights</i>)	n.a	Tourist Arrivals by Place of Stay	
Tourist Arrivals by Purpose of Visit		➔ <i>Hotels</i>	19.7%
➔ <i>Holiday</i>	83.2%	➔ <i>Guest Houses/Apartments</i>	7.9%
➔ <i>Business</i>	11.3%	➔ <i>Private</i>	64.7%
➔ <i>Other</i>	5.5%	➔ <i>Other</i>	7.7%
TOURISM AND OTHER RELATED ECONOMIC STATISTICS			
Total Expenditure (<i>US\$ millions</i>)	\$60.3	GDP at Factor Cost (<i>US\$ millions</i>)	\$226.8
Tourism Budget (<i>US\$ thousands</i>) ^{IV bf}	\$1,568	Consumer Price Index (% ch. 2004/'03)	2.5%
Hotel and Restaurant contribution to GDP ^I	2.7%		
ACCOMMODATION STATISTICS		SOCIO-ECONOMIC STATISTICS	
Rooms	931	Land Area (<i>square Kilometres</i>)	750
		Population (<i>thousand mid year 2003</i>)	71.2

DOMINICA

**TOURIST ARRIVALS BY MAIN MARKETS
2006**



MONTHLY TOURIST ARRIVALS



DOMINICA

TOURIST ARRIVALS BY COUNTRY OF RESIDENCE

Country of Residence	2002	2003	2004	2005	2006	% Share 2006
U.S.A	15464	15638	17574	18492	22011	26.2
Canada	2039	1968	1724	1977	2552	3.0
United Kingdom	5652	6062	6035	6117	6503	7.7
France	2353	2532	1866	1853	2239	2.7
Other Europe	2126	2178	2307	2288	2561	3.0
OECS	10830	10504	10347	10767	10899	13.0
Other CARICOM	4835	4670	4962	4843	6243	7.4
French W.I	16935	17695	20420	18517	19475	23.2
Other Countries	8959	11943	14852	14403	11558	13.8
TOTAL	69193	73190	80087	79257	84041	100.0

MONTHLY TOURISTS ARRIVALS

Month	2002	2003	2004	2005	2006	% Change 2006/05
January	5019	5118	5743	6208	5431	-12.5
February	6921	6222	7175	7087	8302	17.1
March	5799	6324	4652	6938	5456	-21.4
April	4387	6038	6726	5903	7778	31.8
May	5486	5519	6751	6500	6484	-0.2
June	4766	5335	5479	5353	5400	0.9
July	7277	8149	9073	8635	9935	15.1
August	7610	7089	8227	7466	7899	5.8
September	3477	4083	4475	4029	4387	8.9
October	5669	7972	9127	8605	9451	9.8
November	5849	4605	4962	4523	4838	7.0
December	6933	6736	7697	8010	8680	8.4
TOTAL	69193	73190	80087	79257	84041	6.0

DOMINICA

CRUISE PASSENGER ARRIVALS

Month	2002	2003	2004	2005	2006	% Change
						2006/05
January	30099	29152	47316	40446	56038	38.6
February	22701	23093	47537	30788	52536	70.6
March	22165	24276	52543	37046	42020	13.4
April	14121	15860	39533	28350	32924	16.1
May	1979	3594	13785	16709	15375	-8.0
June	143	130	15414	12501	13201	5.6
July	300	185	12579	12710	13410	5.5
August	91	72	15229	12341	15979	29.5
September	-	-	17665	3134	12361	-
October	7317	13956	23226	20583	27337	32.8
November	17547	26310	47109	36351	50291	38.3
December	20396	40416	51678	50335	48171	-4.3
TOTAL	136859	177044	383614	301294	379643	26.0

Number of Calls	187	206	299	234	314
------------------------	-----	-----	-----	-----	-----

TOTAL VISITOR ARRIVALS BY CATEGORY

Category	2002	2003	2004	2005	2006
Tourists	69193	73190	80087	79257	84041
Cruise Passengers	136859	177044	383614	301511	379643
Other same-day visitors	1676	3928	2577	650	926
TOTAL	207728	254162	466278	381418	464610

TOURIST ACCOMMODATION (Rooms)

Rooms	2002	2003	2004	2005	2006
TOTAL	931	931	791	787	818

Sources: Division of Tourism, National Development Corporation, Department of Statistics- Dominica