

ANGUILLA

Visitor Arrival Summary

Total visitor arrivals to Anguilla totaled 118.4 thousand in 2010 compared to 112.1 thousand in 2009, an increase of 5.6 percent. Stay-over Arrivals continued to exceed the Same-Day Arrivals, which accounted for 47.6 percent of total arrivals and increased by 4.0 percent.

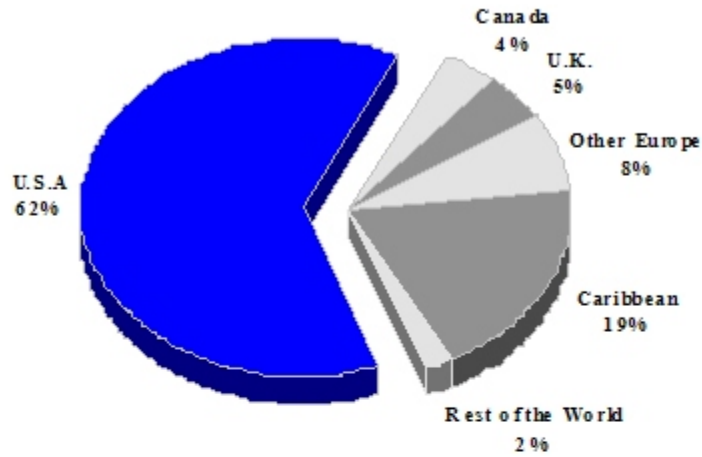
- ◆ Stay-over arrivals, which reached an aggregate of 62.0 thousand, accounted for 52.4 percent of total visitors in 2010, an increase of 7.1 percent.
- ◆ Generally, there were mixed performances among the major source markets in 2010. The United States, which supplied 62.7 percent of total arrivals, grew by 14.1 percent. The 11.9 thousand arrivals from the Caribbean countries in 2010 were 8.3 percent fewer than those visiting in 2009. This market represented 19.1 percent of the total. The United Kingdom (4.7 percent share) fell by 1.1 percent and Other Europe (7.5 percent share), moved upward by 2.7 percent. In total therefore, tourists originating in Europe accounted for 12.2 percent of the market and grew marginally by 1.2 percent. Arrivals from Canada, with a 3.9 percent market share, showed encouraging growth, up by 18.3 percent.

TOURISM HIGHLIGHTS FOR 2010

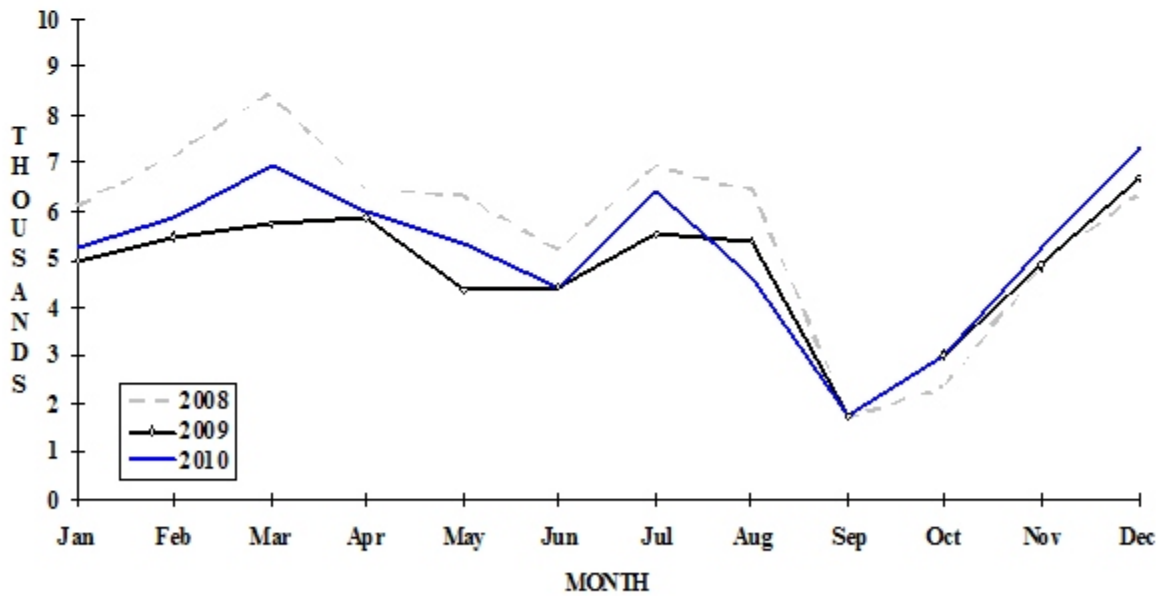
VISITOR ARRIVALS			
Tourist Arrivals ➔	61,998	Same Day Visitors	56,413
➔ <i>Winter</i>	38.8%		
➔ <i>Summer</i>	61.2%		
VISITOR PROFILE			
Average Length of Stay (<i>nights</i>)	8.0	Tourist Arrivals by Purpose of Visit ^{II}	
		➔ <i>Holiday</i>	95.6%
		➔ <i>Business</i>	4.4%
TOURISM AND OTHER RELATED ECONOMIC STATISTICS			
Average Daily Expenditure (<i>US\$</i>) ^{VII}		Visitor Expenditure (<i>US\$ millions</i>)	\$99.4
➔ <i>Winter</i>	\$213.81	GDP at Factor Cost (<i>US\$ millions</i>) ^I	\$181.0
➔ <i>Summer</i>	\$154.49	Consumer Price Index (% <i>ch. 2010/'09</i>)	1.0%
Tourism Budgets (<i>US\$ thousands</i>) ^{XI}	\$819	Hotel and Restaurant contribution to GDP ^{III}	22.6%
ACCOMMODATION STATISTICS		SOCIO-ECONOMIC STATISTICS	
Rooms ^I	547	Land Area (<i>square Kilometres</i>)	91
Occupancy rate ^{VII}	41.9%	Population (<i>thousand, mid year 2009</i>)	15.7

ANGUILLA

TOURIST ARRIVALS BY MAIN MARKETS 2010



MONTHLY TOURIST ARRIVALS



ANGUILLA

VISITOR ARRIVALS BY CATEGORY

Category	2006	2007	2008	2009	%Share	
					2010	2010
Tourists	72962	77652	68284	57891	61998	52.4
Same-day visitors	94283	86415	59577	54224	56413	47.6
TOTAL	167245	164067	127861	112115	118411	100.0
By Sea	133794	128905	100720	95030	101261	85.5
By Air	33451	35162	27141	17150	17150	14.5

TOURIST ARRIVALS BY COUNTRY OF RESIDENCE

Country of Residence	2006	2007	2008	2009	%Share	
					2010	2010
U.S.A.	44489	45974	40202	34073	38882	62.7
Canada	1977	2393	2074	2032	2403	3.9
United Kingdom	4344	4568	3816	2947	2914	4.7
Other Europe	4874	6227	5127	4510	4630	7.5
Caribbean	15280	15425	14748	12924	11851	19.1
Other	1998	3065	2317	1405	1318	2.1
TOTAL	72962	77652	68284	57891	61998	100.0

ANGUILLA

MONTHLY TOURIST ARRIVALS*

Months	2006	2007	2008	2009	% Change	
					2010	2010\09
January	6042	7411	6108	4958	5207	5.0
February	6681	7668	7177	5489	5892	7.3
March	7718	9895	8446	5714	6969	22.0
April	8392	7736	6442	5861	5998	2.3
May	6466	6907	6322	4354	5286	21.4
June	5845	6017	5177	4340	4384	1.0
July	6588	6936	6964	5537	6398	15.6
August	6086	6929	6443	5374	4643	-13.6
September	2196	1889	1675	1706	1763	3.3
October	2513	2847	2320	2985	2956	-1.0
November	6268	6063	4866	4874	5213	7.0
December	8167	7354	6344	6699	7289	8.8
TOTAL	72962	77652	68284	57891	61998	7.1

**Excluding visiting Anguillan nationals who reside abroad*

TOURIST ACCOMMODATION (Rooms)

Type of Accommodation	2005	2006	2007	2008	% Share
					2008
Hotels ¹	337	400	403	319	53.0
Guest Houses	96	135	135	158	26.2
Apartments/Villas	313	204	182	125	25.2
TOTAL	746	739	720	602	100.0

¹ *Sonesta Hotel closed in September 2002*

Source: Anguilla Statistics Department

ANTIGUA AND BARBUDA

Visitor Arrival Summary

For the second consecutive year, tourist arrivals to Antigua and Barbuda declined. This destination hosted almost 4.5 thousand fewer tourists in 2010 than in 2009, representing a slight 1.9 percent decrease. Overall, 138.7 thousand arrivals or 60.3 percent of total arrivals were registered in the Summer months, whereas 91.2 thousand tourists came in the Winter period.

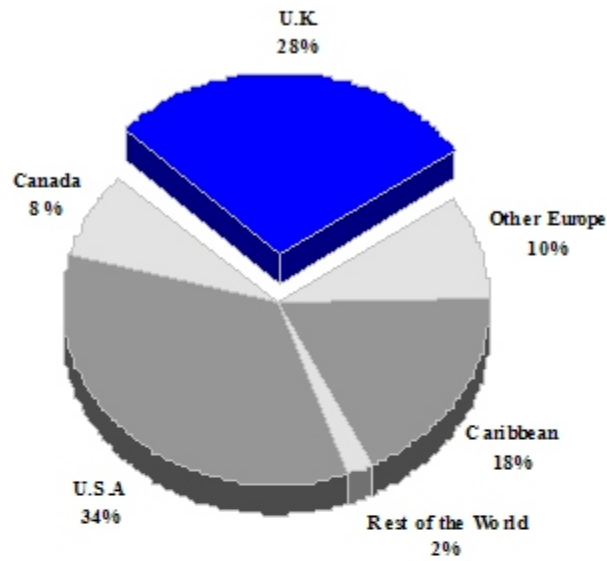
- ◆ The European market, holding a 38.7 percentage share, contracted by 4.8 percent. There were 0.6 percent fewer arrivals from the United States. The Caribbean market likewise shrank by 9.7 percent, falling below the 41.5 thousand arrivals recorded in 2009, to end at 37.5 thousand in 2010. Arrivals from the Rest of the World, also fell from the 2009 level by 7.5 percent in 2010. The Canadian market, although only accounting for 7.7 percent of total arrivals, was the only market to improve upon last year's performance, expanding by a healthy 37.6 percent.
- ◆ Cruise Arrivals to this twin-island destination suffered a significant 21.8 percent setback in 2010. Some 155.2 thousand fewer passengers sailed into port. This was due in part to the fact that only 299 ships visited versus 366 in the previous year.

TOURISM HIGHLIGHTS FOR 2010

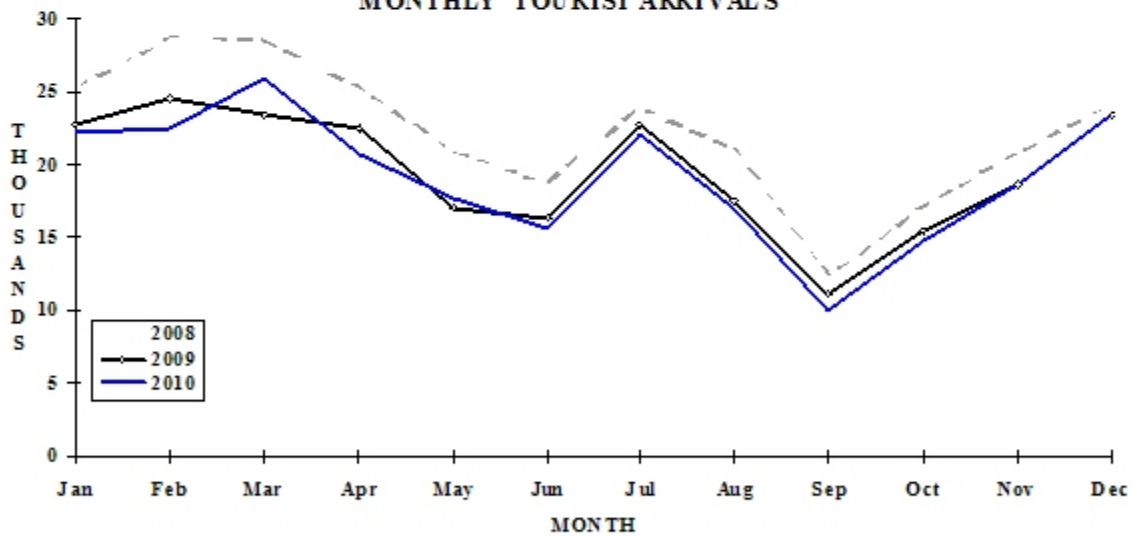
VISITOR ARRIVALS			
Tourist Air Arrivals ➔	229,943	Cruise Passenger Arrivals	557,635
➔ <i>Winter</i>	39.7%	➔ <i>Winter</i>	55.7%
➔ <i>Summer</i>	60.3%	➔ <i>Summer</i>	44.3%
		Cruise Ship Calls	299
VISITOR PROFILE			
Tourist Arrivals by Purpose of Visit		Age Distribution of Visitors ^I	
➔ <i>Holiday</i>	95.1%	➔ 15 and Under	8.2%
➔ <i>Business</i>	2.5%	➔ 15-44	56.6%
➔ <i>Other</i>	2.4%	➔ 45-64	26.9%
		➔ 65+	8.3%
TOURISM AND OTHER RELATED ECONOMIC STATISTICS			
Total Expenditure (<i>US\$ million</i>)	\$297.7	Hotel and Restaurant contribution to GDP ^{III}	8.6%
GDP at Factor Cost (<i>US \$million</i>) ^I	\$962.6	Consumer Price Index (% <i>ch.</i> 2010/'09)	3.4%
ACCOMMODATION STATISTICS		SOCIO-ECONOMIC STATISTICS	
Rooms ^{II}	4,676	Land Area (<i>square Kilometres</i>)	440
Occupancy Rate	55.7%	Population (<i>thousand mid year 2009</i>)	89.1

ANTIGUA & BARBUDA

**TOURIST ARRIVALS BY MAIN MARKETS
2010**



MONTHLY TOURIST ARRIVALS



ANTIGUA AND BARBUDA

TOURIST ARRIVALS BY COUNTRY OF RESIDENCE*

Country of Residence	2006	2007	2008	2009	2010	% Share 2010
U.S.A.	73497	78698	84032	82068	81598	35.5
Canada	10053	10489	13189	12947	17818	7.7
United Kingdom	89564	96801	89514	73251	66623	29.0
Other Europe	17123	18653	20752	20191	22322	9.7
Caribbean	58994	50323	52954	41546	37505	16.3
Rest of World	4439	6838	5403	4407	4077	1.8
TOTAL	253670	261802	265844	234410	229943	100.0

* Non-national Air Arrivals only

The statistics above exclude yacht and other tourist arrivals by sea, as well as visits by nationals of Antigua and Barbuda who permanently reside abroad. Further details are provided below

OTHER VISITORS	2003	2004	2005	2006	2007
Yacht	n.a	n.a	n.a	21531	24686
Other Sea Arrivals	n.a	n.a	n.a	n.a	n.a
Nationals Resident Abroad	n.a	n.a	n.a	n.a	n.a

MONTHLY TOURIST ARRIVALS*

Months	2006	2007	2008	2009	2010	%Change 2010/09
January	22932	22601	25119	22657	22230	-1.9
February	24815	23325	28614	24471	22378	-8.6
March	26410	29441	28421	23272	25908	11.3
April	25523	22806	25259	22416	20686	-7.7
May	19698	19572	20885	17048	17719	3.9
June	17779	17819	18634	16365	15597	-4.7
July	22764	23450	23883	22538	22029	-2.3
August	20757	21252	20972	17410	17027	-2.2
September	12893	13384	12211	11141	9936	-10.8
October	16744	19149	17159	15279	14679	-3.9
November	19368	21972	20662	18510	18472	-0.2
December	23987	27031	24022	23303	23282	-0.1
TOTAL	253670	261802	265841	234410	229943	-1.9

* Non-national Air Arrivals only

ANTIGUA AND BARBUDA

CRUISE PASSENGER ARRIVALS

Months	2006	2007	2008	2009	% Change	
					2010	2010/09
January	69956	99256	92222	98098	87564	-10.7
February	64636	85497	76770	93542	88010	-5.9
March	64783	90545	85794	104487	82834	-20.7
April	61851	69544	61489	80256	52056	-35.1
May	10092	29762	28499	39480	13810	-65.0
June	7373	23074	19654	20162	8874	-56.0
July	7456	23058	19574	27246	10389	-61.9
August	7454	24275	22711	19616	8472	-56.8
September	10968	21995	9328	18914	9769	-48.4
October	18365	34434	11222	38124	21514	-43.6
November	66906	73680	67422	65177	69404	6.5
December	81783	97668	86168	107690	104939	-2.6
TOTAL	471623	672788	580853	712792	557635	-21.8

Cruise Ship Calls** 352 384 296 366 299

** At the Deep Water Harbour , Nelson Dockyard and Heritage Quay.

TOURIST ACCOMMODATION (Rooms)

Type of Accommodation	2004	2005	2006	2007	2008
Hotels	2855	n.a	n.a	n.a	n.a
Apartments/Villa	388	n.a	n.a	n.a	n.a
Guest Houses	33	n.a	n.a	n.a	n.a
TOTAL	3276	n.a	3393	4676	4676

Source: Antigua Department of Tourism

ARUBA

Visitor Arrival Summary

Aruba made a slight recovery from the dip in arrivals in 2009. Tourist Arrivals were aggregated at 825.5 thousand against 812.6 thousand a year earlier, an increase of 1.6 percent. Arrivals during the Winter period grew by 3.7 percent whilst the performance in the Summer months was flat (up by less than 1 percent) when compared to similar periods in 2009.

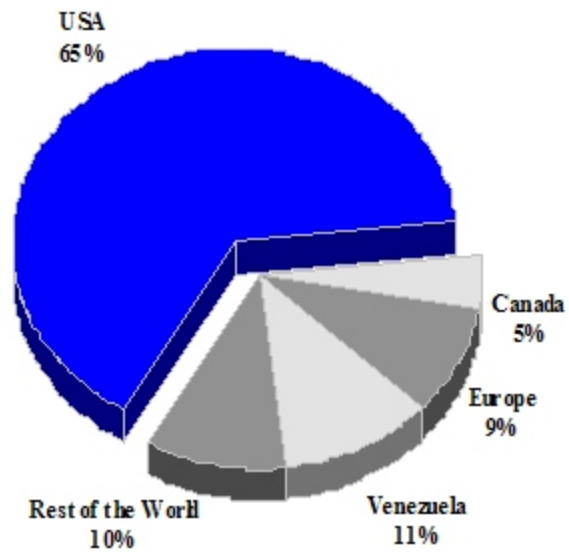
- ◆ At the end of 2010, a total of 535.8 thousand American tourists visited Aruba. This was 1.5 percent more than the number hosted in 2009, but still below the record of 538.4 thousand of 2008. The US market accounted for just under 65.0 percent of total Stay-over arrivals, which clearly continued to be the most important market. Neighboring Venezuela, with 11.0 percent of total arrivals, being the second most crucial source market, continued its weakened performance, falling by some 13.4 percent. Overall, arrivals from Europe (9.3 percent share) rose by 1.8 percent, grossing 76.4 thousand. Dutch tourists (4.9 percent share) were down by 1.8 percent. Arrivals from other European countries (4.3 percent share) increased by 6.2 percent. The Canadian market continued to show steady growth, bettering the 2009 performance by 11.4 percent. Arrivals from Brazil almost doubled in 2010, moving from 10.6 thousand to 20.2 thousand, or a whopping 91.0 percent.
- ◆ Cruise Passenger Arrival numbers sank below the 2009 record level, with a total of 569.4 thousand in 2010. This 6.2 percent decrease in arrivals resulted from the 13 fewer cruise ships docking in this southern Caribbean Dutch island.

TOURISM HIGHLIGHTS FOR 2010

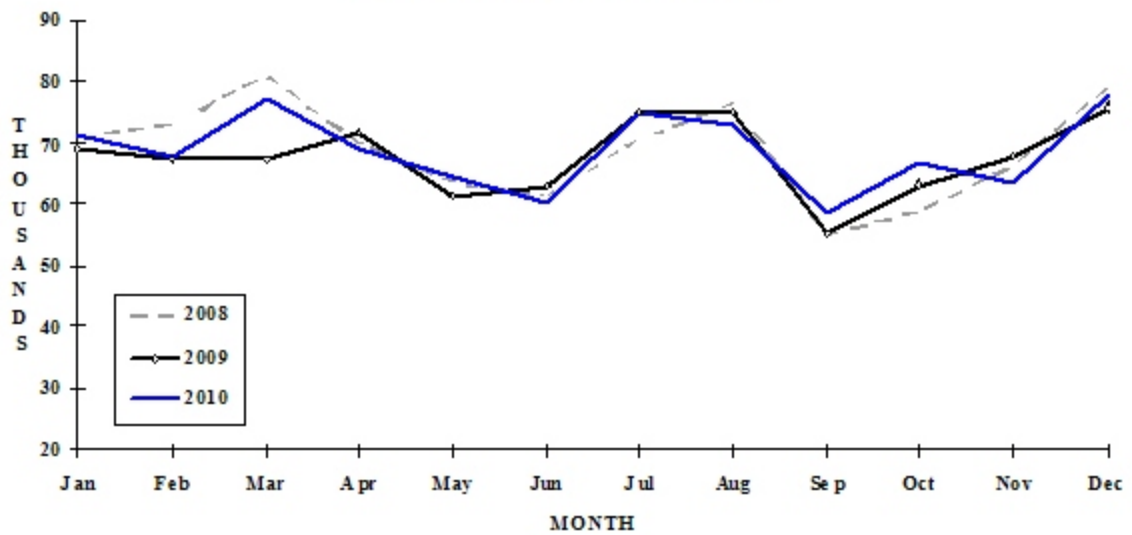
VISITOR ARRIVALS			
Tourist Arrivals →	825,451	Cruise Passenger Arrivals	569,424
→ <i>Winter</i>	34.6%	→ <i>Winter</i>	54.9%
→ <i>Summer</i>	65.4%	→ <i>Summer</i>	45.1%
		Cruise Ship Calls	314
VISITOR PROFILE			
Average Length of Stay (nights)	7.8	Tourist Arrivals by Place of Stay	
Tourist Arrivals by Purpose of Visit ^{II}		→ Hotels	87.2%
→ <i>Holiday</i>	90.7%	→ Guest Houses/Apartments	0.9%
→ <i>Business</i>	2.5%	→ Private	11.9%
→ <i>Other</i>	7.8%		
TOURISM AND OTHER RELATED ECONOMIC STATISTICS			
Total Expenditure (<i>US\$ millions</i>)	\$1,235.8	Tourism Budget (<i>US\$ thousands</i>) ^{Vb}	\$23,595
Receipts per visitor night (<i>US\$</i>) ^{II}	\$225.14	Consumer Price Index (% ch. 2010/'09)	2.1%
ACCOMMODATION STATISTICS		SOCIO-ECONOMIC STATISTICS	
Rooms	8,831	Land Area (<i>square Kilometres</i>)	180
Room Occupancy Rate	78.1%	Population (<i>thousand mid year 2010</i>)	107.6

ARUBA

TOURIST ARRIVALS BY MAIN MARKETS 2010



MONTHLY TOURIST ARRIVALS



TOURIST ARRIVALS BY COUNTRY OF RESIDENCE

Country of Residence	2006	2007	2008	2009	2010	% Share 2010
U.S.A.	493285	520361	538373	528104	535814	64.9
Canada	22590	25672	32530	33856	37702	4.6
Holland	37130	37844	41874	41211	40487	4.9
Other Europe	24863	29750	31898	33789	35875	4.3
Venezuela	57105	92157	112986	105063	90949	11.0
Brazil	6667	7480	8745	10594	20234	2.5
Other South America	20855	22633	25566	28169	30463	3.7
Neth. Antilles	19924	22456	21992	21536	23435	2.8
Other Caribbean	8461	9598	7323	6669	6705	0.8
Rest of World	3492	4339	5390	3632	3787	0.5
TOTAL	694372	772290	826677	812623	825451	100.0

MONTHLY TOURIST ARRIVALS

Months	2006	2007	2008	2009	2010	% Change 2010/09
January	55590	58997	71262	69225	71396	3.1
February	55716	59837	73007	67107	67710	0.9
March	59032	68193	81205	67456	77258	14.5
April	67406	67825	69889	71621	69192	-3.4
May	52050	51817	63612	61479	64383	4.7
June	54390	59028	61370	63117	60243	-4.6
July	63602	67659	70713	75231	75369	0.2
August	62324	72537	76614	75220	73230	-2.6
September	48470	57955	55007	55162	58460	6.0
October	55048	62868	58955	63252	67034	6.0
November	56011	67851	66157	67848	63388	-6.6
December	64733	77723	78886	75905	77788	2.5
TOTAL	694372	772290	826677	812623	825451	1.6

CRUISE PASSENGER ARRIVALS

Months	2006	2007	2008	2009	2010	% Change 2010/09
January	69393	75219	91387	99309	89392	-10.0
February	64878	54706	91595	83103	79592	-4.2
March	75179	65711	84783	96082	77523	-19.3
April	57402	47483	59775	65448	66304	1.3
May	31445	23345	14147	12268	16952	38.2
June	22817	10791	7034	12035	11474	-4.7
July	17304	10879	10763	10437	4814	-53.9
August	24136	11650	9551	13029	4827	-63.0
September	22741	11272	8692	12231	7478	-38.9
October	46486	25858	26068	37346	40062	7.3
November	75677	67807	63296	81868	88231	7.8
December	84016	77054	88949	83612	82775	-1.0
TOTAL	591474	481775	556040	606768	569424	-6.2

Cruise Ship Calls	314	315	299	327	314
-------------------	-----	-----	-----	-----	-----

TOURIST ACCOMMODATION (Rooms)

Type of Accommodation	2006	2007	2008	2009	2010
Hotels, Apartments	n.a	n.a	n.a	n.a	n.a
Condo	n.a	n.a	n.a	n.a	n.a
Other	n.a	n.a	n.a	n.a	n.a
TOTAL	7156	8347	8799	8831	8831

* Based on data from the Aruba Hotel and Tourism Association (AHATA)

Source: Aruba Tourism Authority

THE BAHAMAS

Visitor Arrival Summary

Total Stay-over Arrivals to the Bahamas totaled 1,370.0 thousand in 2010, a 3.2 percent improvement over the 2009 performance. The 4.7 percent growth in the Summer months accounted largely for this increase. During the winter period, only the month of March (up 10.0 percent) recorded growth over the same period last year whilst the other three months registered decreases between 2.0 percent and 5.0 percent. The net result was a 0.7 percent increase for the first four months.

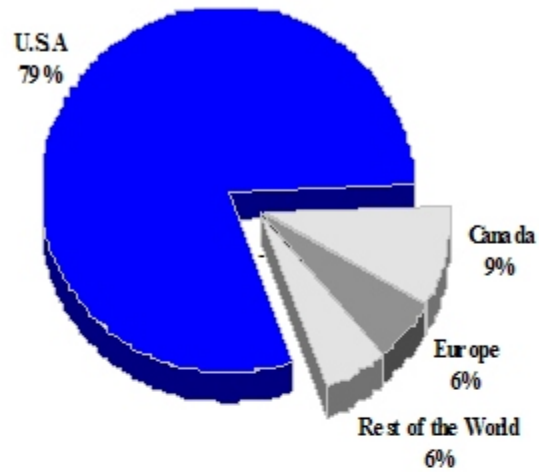
- ◆ Air Arrivals from the United States, accounting for 80.1 percent of total arrivals, showed slightly better performance by supplying 2.6 percent more stay-over tourists. During 2010, the largest number of Canadians to ever have visited this destination was recorded. In all, 119.3 thousand stay-overs (12.3 thousand more arrivals - an 11.5 percent growth) originated from Canada. The European market was the only source market sustaining a minor loss of less than 1.0 percent in 2010. The aggregate moved down from 78.8 thousand in 2009 to just over 78.0 thousand in 2010. Arrivals from all other markets combined totaled 75.6 thousand, a 4.4 percent increase.
- ◆ The Bahamas Cruise industry continued to recover from the 2007 and 2008 slump, surging to 3,803.1 thousand passengers in 2010. This robust 16.8 percent increase was the result of improved performances during the Winter and Summer periods, recorded at 14.2 percent and 18.3 percent increases respectively.

TOURISM HIGHLIGHTS FOR 2010

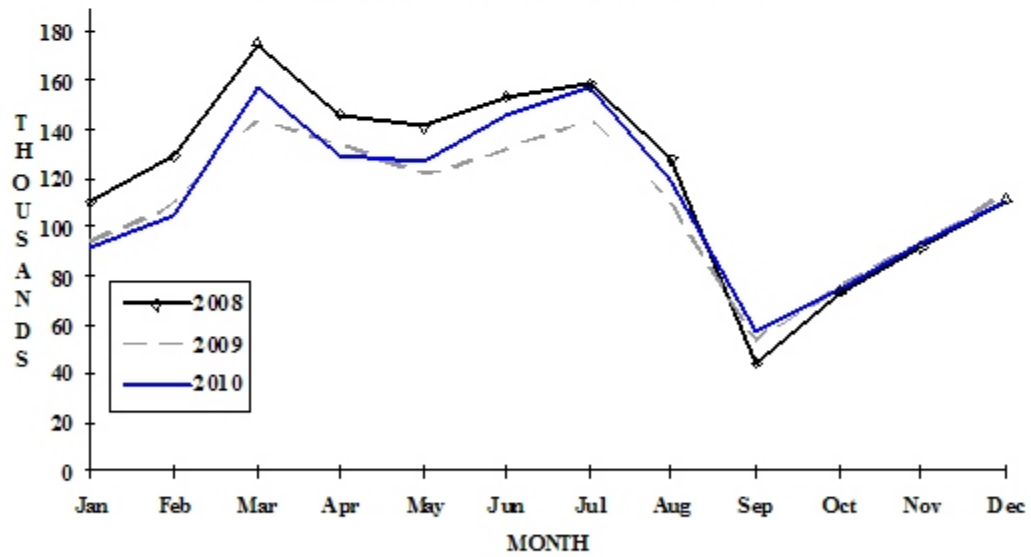
VISITOR ARRIVALS			
Tourist Arrivals ➔	1,370,028	Cruise Passenger Arrivals	3,803,122
➔ <i>Winter</i>	35.4%	➔ <i>Winter</i>	35.4%
➔ <i>Summer</i>	64.6%	➔ <i>Summer</i>	64.6%
Same Day Visitors	n.a	Cruise Ship Calls	1,810
VISITOR PROFILE			
Average Length of Stay (<i>nights</i>) ^I	6.8	Tourist Arrivals by Place of Stay^{II}	
Tourist Arrivals by Purpose of Visit^{IV}		➔ <i>Hotels</i>	72.5%
➔ <i>Holiday</i>	89.1%	➔ <i>Guest Houses/Apartments</i>	4.4%
➔ <i>Business</i>	9.5%	➔ <i>Private</i>	11.6%
➔ <i>Other</i>	1.4%	➔ <i>Other</i>	11.5%
TOURISM AND OTHER RELATED ECONOMIC STATISTICS			
Total Expenditure (<i>US\$ millions</i>) ^I	\$2,014.2	GDP at Market Prices (<i>US\$ million</i>) ^{II}	\$7,564.1
Cruise Expenditure (<i>US\$ millions</i>) ^I	\$199.7	Consumer Price Index (<i>%ch. 2009/'08</i>)	1.9%
Tourism Budget (<i>US\$ thousands</i>) ^{IVb}	\$73,331		
ACCOMMODATION STATISTICS		SOCIO-ECONOMIC STATISTICS	
Rooms ^I	15,276	Land Area (<i>square Kilometres</i>)	13,864
Room Occupancy Rates ^I	49.4%	Population (<i>thousand mid year 2010</i>)	346.9

THE BAHAMAS

TOURIST ARRIVALS BY MAIN MARKETS
2010



MONTHLY TOURIST ARRIVALS



VISITOR ARRIVALS BY CATEGORY

Category	2006	2007	2008	2009	2010
Tourists	1600862	1527726	1463006	1327007	1370028
Cruise Passenger	3078534	2970659	2861140	3255780	3803122
Day Visitors	n.a	n.a	n.a	n.a	n.a
TOTAL	4679396	4498385	4324146	4582787	5173150

TOURIST ARRIVALS BY COUNTRY OF RESIDENCE

Country of Residence	2006	2007	2008	2009	2010	% Share 2010
United States	1365104	1263678	1177271	1068726	1097045	80.1
Canada	84639	100340	114960	107041	119321	8.7
Europe	82209	87170	93803	78817	78082	5.7
Rest of the World	68910	76538	76972	72423	75580	5.5
TOTAL	1600862	1527726	1463006	1327007	1370028	100.0

MONTHLY TOURIST ARRIVALS

Months	2006	2007	2008	2009	2010	% Change 2010/09
January	109739	103672	110503	93679	91260	-2.6
February	131770	120831	129001	110079	104913	-4.7
March	182244	176111	174681	143453	157863	10.0
April	169800	151203	146273	133767	130309	-2.6
May	155035	138129	140942	122475	127176	3.8
June	170873	160641	153239	131192	145603	11.0
July	163518	158671	158876	144226	157407	9.1
August	120715	134695	128151	109130	119960	9.9
September	73942	70425	44307	53822	57272	6.4
October	82745	80637	73897	76568	74248	-3.0
November	111981	107961	91741	93265	93576	0.3
December	128500	124750	111395	115351	110441	-4.3
TOTAL	1600862	1527726	1463006	1327007	1370028	3.2

TOURIST ARRIVALS BY AREA*

Area	2006	2007	2008	2009	2010
Grand Bahama	298937	279193	265176	228744	220648
Nassau\New Providence	1019198	960767	929249	864016	910774
Family Islands	282727	287766	268581	234247	238606
TOTAL	1600862	1527726	1463006	1327007	1370028

* Intended address in The Bahamas

CRUISE PASSENGER ARRIVALS

Months	2006	2007	2008	2009	% Change	
					2010	2010/09
January	272325	287372	255782	311773	328023	5.2
February	256617	251315	295713	274721	310630	13.1
March	310835	315770	317250	317784	377641	18.8
April	321492	266626	247281	275770	331503	20.2
May	244376	220646	191827	256117	293594	14.6
June	231816	209443	176458	241154	277683	15.1
July	246289	226927	178189	235931	295775	25.4
August	225041	233201	208729	251713	304237	20.9
September	190834	200659	162129	197786	242116	22.4
October	209638	188156	231502	239543	327834	36.9
November	254122	245365	266934	313470	364659	16.3
December	315149	325179	329346	340018	349427	2.8
TOTAL	3078534	2970659	2861140	3255780	3803122	16.8
Grand Bahama	339913	311762	312780	376502	572010	51.9
New Providence	1660094	1638174	1471835	1713725	1927951	12.5
Family Islands	1076390	1020723	1076525	1165553	1303161	11.8

TOURIST ACCOMMODATION (Rooms)*

Type of Accommodation	2006	2007	2008	2009	2010
Total Rooms	14929	16340	16297	15276	n.a

*Licensed Properties

Source: Bahamas Ministry of Tourism

BARBADOS

Visitor Arrival Summary

Tourist Arrivals to Barbados staged a moderate recovery in 2010 when the island hosted approximately 532.2 thousand tourists. This was an improvement of just under 3.0 percent when compared with 2009 owing mainly to the 4.4 percent increase in the Summer season which offset the minute 0.5 percent reduction in arrivals seen in the Winter season.

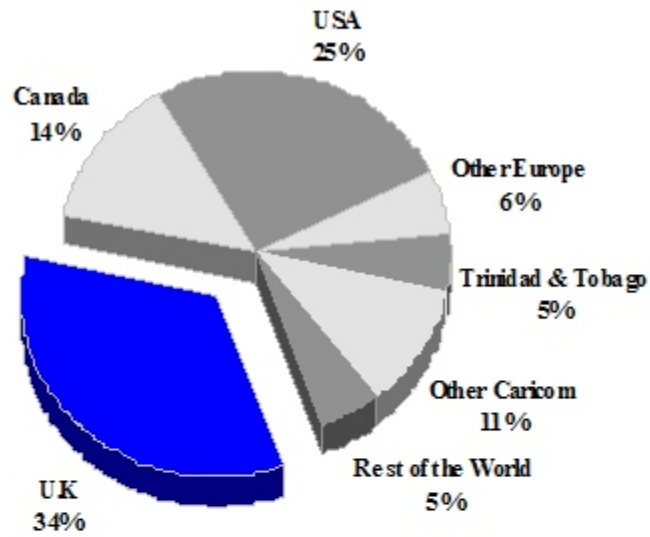
- ◆ The United Kingdom continued as the main source market for Barbados, supplying 181.0 thousand or 34.0 percent of all stay-over arrivals. This market recorded a 5.0 percent decline or 9.6 thousand fewer tourists in 2010. The United States rebounded by a creditable 10.4 percent, with arrivals increasing from 122.3 thousand in 2009 to just under 135.0 thousand in 2010. Canada continued its good performance as a source market, growing by 13.5 percent with a total of 72.4 thousand Stay-over arrivals - the highest ever recorded total for this market. In total, 86.2 thousand tourists visited from the CARICOM subregion, 16.2 percent of all Stay-overs for the year, of which 26.3 thousand originated in Trinidad and Tobago, and the remainder from Other CARICOM territories. Tourists from the Rest of the World superceded the aggregates in 2008 and 2009, ending at 26.4 thousand, an increase of 14.6 percent.
- ◆ Even though only 391 cruise ships (15.0 percent fewer than in 2009) berthed in the Bridgetown Cruise Terminal, some 29.0 thousand or 4.6 percent more Cruise passengers visited in 2010. Both the Summer and Winter periods saw an increased number of passengers, growing respectively by 5.7 percent and 3.4 percent in the reporting period. The overall total was 532.2 thousand.

TOURISM HIGHLIGHTS FOR 2010

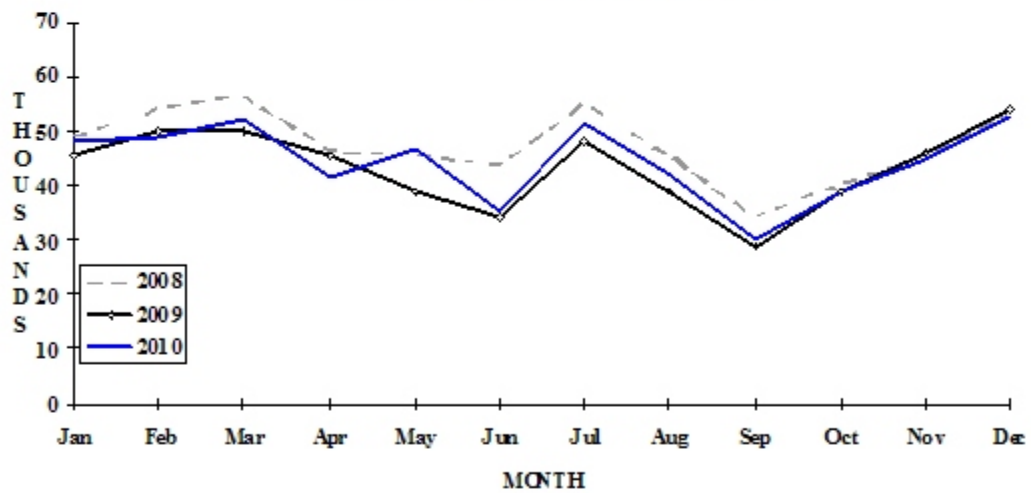
VISITOR ARRIVALS			
Tourist Arrivals ➔	532,180	Cruise Passenger Arrivals	664,747
➔ <i>Winter</i>	35.7%	➔ <i>Winter</i>	49.6%
➔ <i>Summer</i>	64.3%	➔ <i>Summer</i>	50.4%
		Cruise Ship Calls	391
VISITOR PROFILE			
Average Intended Length of Stay (<i>nights</i>) ^V	9.8	Tourist Arrivals by Place of Stay^V	
Tourist Arrivals by Purpose of Visit^{IV}		➔ <i>Hotels</i>	58.7%
➔ <i>Holiday</i>	78.5%	➔ <i>Guest House/Apartment</i>	12.7%
➔ <i>Business</i>	12.4%	➔ <i>Private</i>	28.4%
➔ <i>Other</i>	9.1%	➔ <i>Other</i>	0.2%
TOURISM AND OTHER RELATED ECONOMIC STATISTICS			
Total Expenditure (<i>US\$ millions</i>)	\$1,036.4	Hotel and Restaurant contribution to GDP ^{IV}	11.4%
Average Daily Expenditure (<i>US\$</i>) ^{III}	\$127.48	GDP at Market Prices (<i>US\$ million</i>) ^I	\$3,279.2
Tourism Budget (<i>US\$ thousands</i>) ^{IXb}	\$22,137	Consumer Price Index (% <i>ch.</i> 2010/'09)	4.0%
ACCOMMODATION STATISTICS		SOCIO-ECONOMIC STATISTICS	
Rooms	6,659	Land Area (<i>square Kilometres</i>)	432.0
Room Occupancy Rates ^{III}	67.1%	Population (thousand mid year 2009)	275.3

BARBADOS

**TOURIST ARRIVALS BY MAIN MARKETS
2010**



MONTHLY TOURIST ARRIVALS



BARBADOS

TOURIST ARRIVALS BY COUNTRY OF RESIDENCE

Country of Residence	2006	2007	2008	2009	% Share	
					2010	2010
United States	130767	133519	131795	122306	134969	25.4
Canada	49198	52981	57335	63751	72351	13.6
United Kingdom	211523	223575	219953	190632	181054	34.0
Other Europe	29400	27198	31825	30072	31222	5.9
Trinidad & Tobago	34480	30404	28385	26289	27259	5.1
Other Caricom	82989	68979	72254	62482	58923	11.1
Rest of World	24201	36281	26120	23032	26402	5.0
TOTAL	562558	572937	567667	518564	532180	100.0

MONTHLY TOURIST ARRIVALS

Months	2006	2007	2008	2009	% Change	
					2010	2010/09
January	48888	47006	48958	45455	48336	6.3
February	51580	49316	54224	49838	48585	-2.5
March	53169	47375	56027	50237	51570	2.7
April	53484	63841	46330	45277	41357	-8.7
May	41849	46267	45342	38665	46813	21.1
June	38708	41980	43540	34377	35179	2.3
July	52315	54278	55005	48046	51499	7.2
August	48366	46685	45309	39034	41882	7.3
September	32333	32331	34166	28892	30065	4.1
October	41153	41568	40168	38757	39030	0.7
November	45260	47806	45232	46251	44838	-3.1
December	55183	54484	53366	53735	53026	-1.3
TOTAL	562288	572937	567667	518564	532180	2.6

CRUISE PASSENGER ARRIVALS

Months						% Change	
	2006	2007	2008	2009	2010	2010/09	
January	64981	87192	110818	93437	84630	-9.4	
February	57894	64267	71252	82625	80364	-2.7	
March	62211	62034	88556	84625	94470	11.6	
April	56553	65722	66531	57872	69961	20.9	
May	22488	24978	20343	29230	20873	-28.6	
June	22905	22154	19173	20902	18029	-13.7	
July	19705	26566	22326	24667	19500	-20.9	
August	22266	26855	19118	22631	19777	-12.6	
September	22571	21328	12550	27268	15778	-42.1	
October	32381	31852	14404	26988	36798	36.3	
November	69715	93544	56729	63468	81548	28.5	
December	85422	121144	95726	102033	123019	20.6	
TOTAL	539092	647636	597526	635746	664747	4.6	

Cruise Ship Calls	440	486	425	460	391
-------------------	-----	-----	-----	-----	-----

TOURIST ACCOMMODATION (Rooms)

Type of Accommodation	2002	2003	2004	2005
Hotels	} 4984	2663	n.a	4937
Apartment Hotels		2326	n.a	1245
Apartments & Cottages	1589	1071	n.a	-
Guest Houses	169	150	n.a	171
TOTAL	6742	6210	5945	6353

Source: Barbados Statistical Service

BELIZE

Visitor Arrival Summary

After two consecutive years of declining arrival levels in Belize, the Tourism industry was boosted by the influx of 6.6 thousand more tourists in 2010 than in 2009. This modest performance was the net effect of arrivals increasing in both the Winter season (1.7 percent) and the Summer season (3.6 percent).

- ◆ With the exception of the European market (12.1 percent of total arrivals) which dropped by 2.6 percent, all other major markets rebounded in 2010. The United States, with a leading market share of 60.8 percent of all tourists to the destination, bettered its 2009 performance by 4.0 percent or 5.5 thousand more arrivals. The Canadian market increased by a similar percentage, ending at 17.9 thousand Stay-overs. The Rest of the World category which encompasses arrivals from the Caribbean, Central and South America grew by 2.5 percent.
- ◆ Belize welcomed 279 cruise ships in 2010, five fewer than the previous year. However, the Cruise Passenger numbers climbed by 8.4 percent, totaling 764.6 thousand.

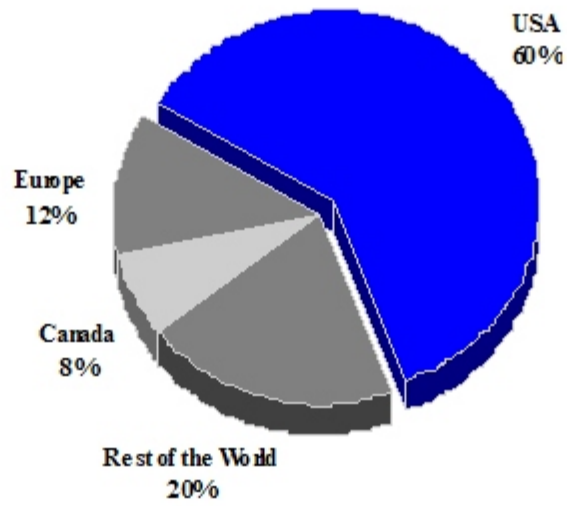
TOURISM HIGHLIGHTS FOR 2010

VISITOR ARRIVALS			
Tourist Arrivals →	238,875	Cruise Passenger Arrivals	764,628
→ <i>Winter</i>	40.0%	→ <i>Winter</i>	46.8%
→ <i>Summer</i>	60.0%	→ <i>Summer</i>	53.2%
		Cruise Ship Calls	279
VISITOR PROFILE			
Average Length of Stay (<i>nights</i>)	7.7	Tourist Arrivals by Place of Stay ^{IV}	
Tourist Arrivals by Purpose of Visit		→ <i>Hotels</i>	64.7%
→ <i>Holiday</i>	94.7%	→ <i>Guest House/Apartment</i>	19.1%
→ <i>Business</i>	5.3%	→ <i>Private</i>	9.1%
		→ <i>Other</i>	7.1%
TOURISM AND OTHER RELATED ECONOMIC STATISTICS			
Total Expenditure (<i>US\$ millions</i>) ^{II}	\$281.5	GDP at Factor Cost (<i>US\$ millions</i>)	\$1,056.0
Tourism Budget (<i>US\$ thousands</i>) ^{VI bf}	\$4,838	Consumer Price Index (<i>% ch. 2010/'09</i>)	0.9%
Hotel & Restaurant contribution to GDP ^{II}	4.5%		
ACCOMMODATION STATISTICS		SOCIO-ECONOMIC STATISTICS	
Rooms ^I	6,671	Land Area (<i>square Kilometres</i>)	22,960
Room Occupancy Rates ^I	34.1%	Population (<i>thousand mid year 2009</i>)	333.2

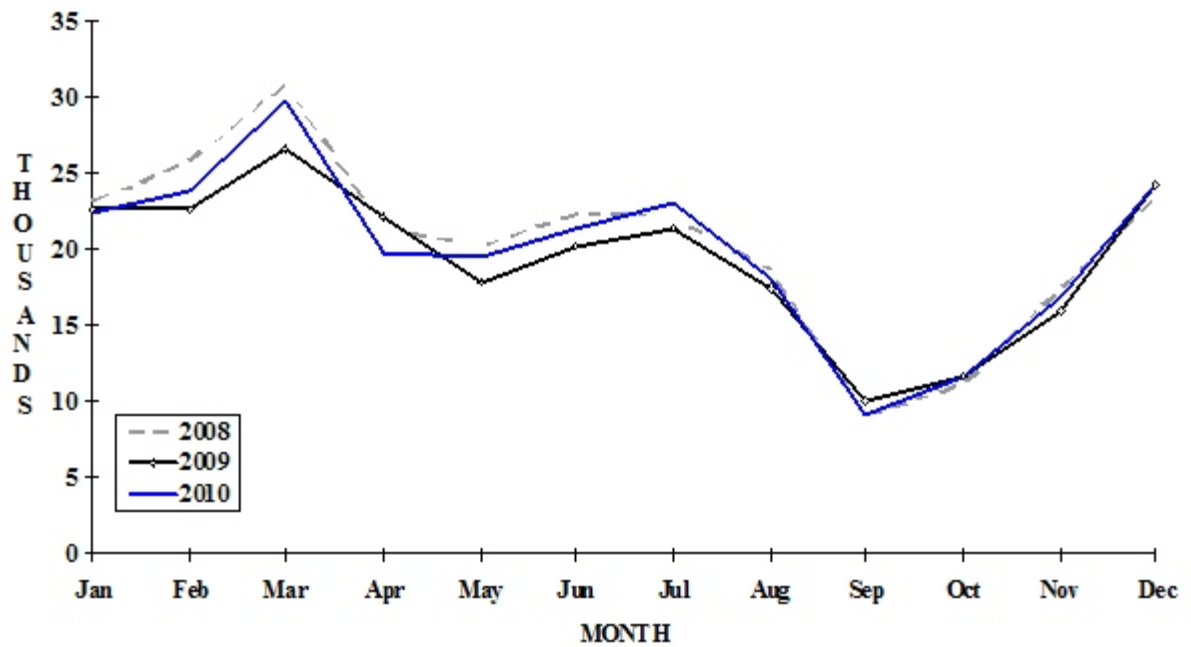
^I Source: Belize 2000, Visitor Expenditure and Motivation Survey

BELIZE

TOURIST ARRIVALS BY MAIN MARKETS
2010



MONTHLY TOURIST ARRIVALS



TOURIST ARRIVALS BY COUNTRY OF RESIDENCE

Country of Residence	2006	2007	2008	2009	% Share	
					2010	2010
United States	151510	152569	148624	139561	145240	60.8
Canada	15553	16655	17695	17211	17962	7.5
Europe	34373	34175	34269	29603	28820	12.1
Rest of World	45873	48024	44420	45872	46853	19.6
TOTAL	247309	251423	245008	232247	238875	100.0

MONTHLY TOURIST ARRIVALS

Months	2006	2007	2008	2009	% Change	
					2010	2010/09
January	22264	21534	23130	22580	22380	-0.9
February	24278	25618	25803	22600	23763	5.1
March	29415	31267	30799	26499	29680	12.0
April	23888	23595	21361	22210	19683	-11.4
May	19898	19938	20209	17855	19473	9.1
June	21572	22409	22261	20118	21326	6.0
July	22024	22710	22146	21291	23046	8.2
August	18498	18112	18655	17461	17927	2.7
September	11626	11079	8957	9994	8966	-10.3
October	10883	12292	11129	11547	11538	-0.1
November	18079	18911	17170	15927	16920	6.2
December	24884	23958	23388	24165	24173	0.0
TOTAL	247309	251423	245008	232247	238875	2.9

Note: Tourist arrivals for Belize excludes border traffic from Guatemala and Mexico who enter Belize daily to conduct trade.

CRUISE PASSENGER ARRIVALS

Months	2006	2007	2008	2009	% Change	
					2010	2010/09
January	79077	95436	81649	76369	94379	23.6
February	77569	86010	69449	68132	88492	29.9
March	94631	95379	78847	81062	104075	28.4
April	62399	64079	46043	64063	71087	11.0
May	27346	29970	35215	39119	39772	1.7
June	35335	26956	26065	36812	41485	12.7
July	29443	30478	36173	43361	36630	-15.5
August	33875	17368	29785	36816	38175	3.7
September	21431	15252	29421	33092	39970	20.8
October	32551	30820	32679	42663	31740	-25.6
November	74960	57551	58007	64063	69934	9.2
December	87314	74829	74037	119667	108889	-9.0
TOTAL	655931	624128	597370	705219	764628	8.4
Cruise Ship Calls	295	278	274	284	279	

VISITOR ACCOMMODATION (Rooms) BY AREA

Area	2005	2006	2007	2008	2009
Belize District	913	874	966	987	950
Ambergris	1259	1401	1443	1559	1601
Cayo District	836	868	942	984	1011
Caye Caulker	546	555	580	600	650
Other	2039	2091	2269	2406	2459
TOTAL	5593	5789	6200	6536	6671

Source: Belize Tourism Board, Statistical Institute of Belize

BERMUDA

Visitor Arrival Summary

Tourist (Air) Arrivals to Bermuda in 2010 totaled 232.3 thousand, a slight decrease of 1.5 percent over the previous year. This continued the series of declines sustained by this destination since 2008. The months for entire Winter season and the latter half of the Summer season registered losses ranging from under 1.0 percent up to 17.9 percent when compared to similar periods of 2009.

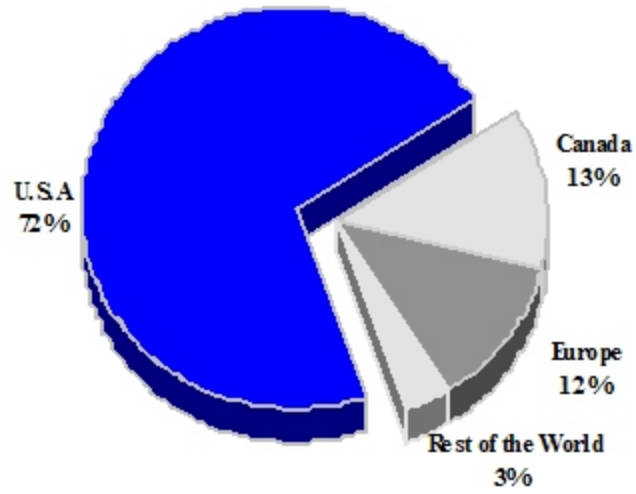
- ◆ Among the major source markets, only Canada and Other Europe registered positive changes. Arrivals from Canada recorded a significant 22.3 percent expansion, totaling 30.4 thousand, nearing the total of 30.7 thousand in 2000. The United States, with 71.5 percent of the year's Stay-over total, contracted to just over 166.0 thousand, a change of -3.8 percent. Arrivals from the United Kingdom slid by 2.8 percent to end at 23.2 thousand. Arrivals from all other countries fell most noticeably, by 21.8 percent.
- ◆ Cruise Passenger Arrivals to Bermuda continued its recovery with 347.9 thousand passengers arriving on 149 cruise ships in 2010. This 9.2 percent increase in passenger arrivals continued the recovery from the 2008 slump caused by the sharp fall off in the number of arriving cruise liners.

TOURISM HIGHLIGHTS FOR 2010

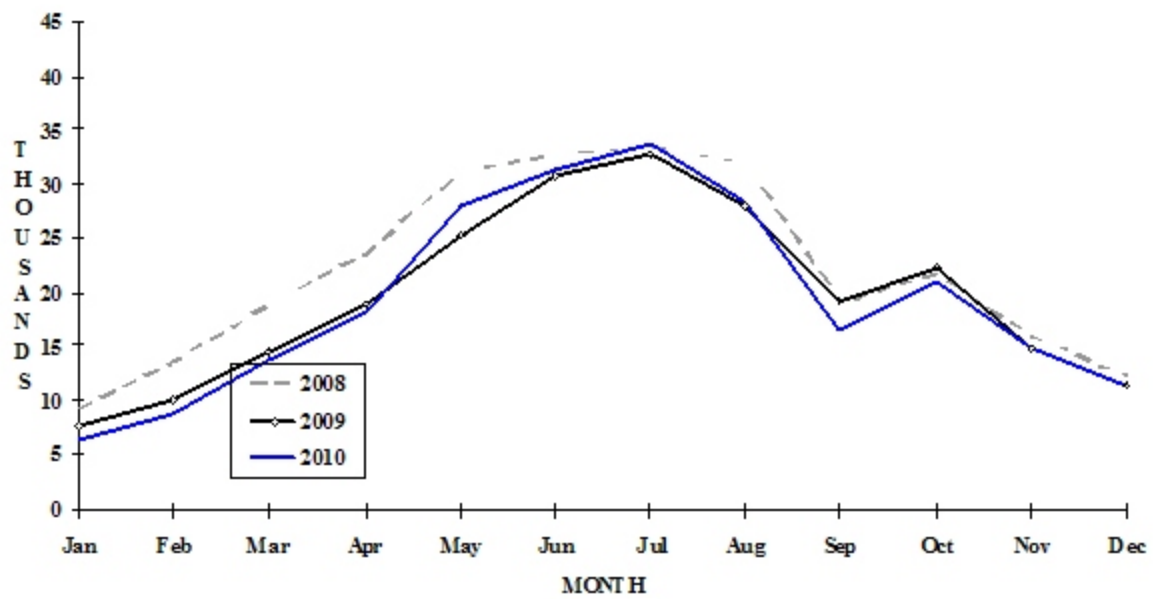
VISITOR ARRIVALS			
Tourist Arrivals ➔	232,262	Cruise Passenger Arrivals	347,931
➔ <i>Winter</i>	20.2%	➔ <i>Winter</i>	10.3%
➔ <i>Summer</i>	79.8%	➔ <i>Summer</i>	89.7%
		Cruise Calls	149
		Yacht visitors	5,073
VISITOR PROFILE			
Average Length of Stay (<i>nights</i>)	6.2	Tourist Arrivals by Place of Stay¹	
Tourist Arrivals by Purpose of Visit		➔ <i>Hotels</i>	57.2%
➔ <i>Holiday</i>	77.9%	➔ <i>Guest House/Apartment</i>	17.0%
➔ <i>Business</i>	19.5%	➔ <i>Private</i>	24.6%
➔ <i>Other</i>	2.6%	➔ <i>Other</i>	1.2%
TOURISM AND OTHER RELATED ECONOMIC STATISTICS			
Total Expenditure (<i>US\$ millions</i>)	\$383.9	Consumer Price Index (<i>% ch. 2010/'09</i>)	2.4%
Tourism Budget (<i>US \$ thousands</i>) ^{1b}	\$35,299	GDP at Factor Cost (<i>US\$ million</i>) ¹	\$5,715.3
ACCOMMODATION STATISTICS		SOCIO-ECONOMIC STATISTICS	
Rooms	2,609	Land Area (<i>square Kilometres</i>)	53
Room Occupancy Rates	54.0%	Population (<i>thousand mid year 2010</i>)	64.6

BERMUDA

TOURIST ARRIVALS BY MAIN MARKETS 2010



MONTHLY TOURIST ARRIVALS



BERMUDA

TOURIST ARRIVALS BY COUNTRY OF RESIDENCE

Country of Residence	2006	2007	2008	2009	% Share	
					2010	2010
United States	227725	229498	189388	172651	166016	71.5
Canada	27675	27844	27207	24866	30402	13.1
United Kingdom	27008	30386	29255	23906	23240	10.0
Other Europe	5339	5552	5748	5044	5258	2.3
Rest of World	11226	12268	12015	9399	7346	3.2
TOTAL	298973	305548	263613	235866	232262	100.0

MONTHLY TOURIST ARRIVALS *

Months	2006	2007	2008	2009	% Change	
					2010	2010/09
January	8594	10725	9320	7703	6327	-17.9
February	11716	13192	13524	10013	8674	-13.4
March	18586	21908	18885	14519	13864	-4.5
April	27874	26787	23557	18811	18067	-4.0
May	34625	34471	31102	25459	28027	10.1
June	38634	38336	32796	30715	31418	2.3
July	38529	37473	33422	32837	33839	3.1
August	36650	37441	32048	27877	28429	2.0
September	21474	22961	18993	19233	16538	-14.0
October	25700	26582	21814	22391	21014	-6.2
November	20887	20762	15970	14800	14783	-0.1
December	15704	14910	12182	11508	11282	-2.0
TOTAL	298973	305548	263613	235866	232262	-1.5

* Excluding ship/air visitors. Due to a report conflict the monthly numbers are missing a small number of arrivals.

BERMUDA

CRUISE PASSENGER ARRIVALS*

Months						% Change	
	2006	2007	2008	2009	2010	2010/09	
January	0	0	0	0	0	-	
February	425	0	0	0	0	-	
March	0	2765	2799	0	985	-	
April	20311	20292	36240	17096	35022	104.9	
May	49075	52527	35963	49899	70222	40.7	
June	53174	57485	57141	57558	66051	14.8	
July	63346	72663	45939	56954	65363	14.8	
August	67459	69619	47855	65454	59324	-9.4	
September	33662	32866	20439	19420	24328	25.3	
October	39240	33334	34550	34347	18289	-46.8	
November	9306	12473	5482	17800	7749	-56.5	
December	301	0	0	0	598	-	
TOTAL	336299	354024	286408	318528	347931	9.2	

Cruise Ship Calls	185	195	134	135	149
-------------------	-----	-----	-----	-----	-----

* Including ship/air visitors

TOURIST ACCOMMODATION (Rooms)

Type of Accommodation	2006	2007	2008	2009	2010
Hotels	n.a	n.a	n.a	n.a	n.a
Apartments	n.a	n.a	n.a	n.a	n.a
Cottage Colonies	n.a	n.a	n.a	n.a	n.a
Guest Houses	n.a	n.a	n.a	n.a	n.a
Clubs/Other	n.a	n.a	n.a	n.a	n.a
Total	2824	2745	2744	2758	2609

Source Bermuda Department of Tourism

BONAIRE

Visitor Arrival Summary

Overall, arrivals to this destination began recovering from the 2009 slump. Tourist Arrivals to Bonaire were reported at 70.5 thousand in 2010, an increase of 5.3 percent. The growth in the Winter period was 8.4 percent, while that in the Summer was 3.6 percent.

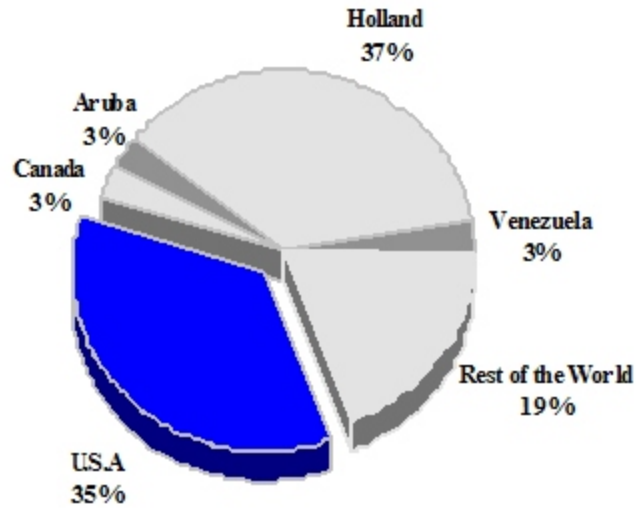
- ◆ The Dutch market, with a 36.6 percent market share, provided most of the impetus for this recovery. Arrivals from Holland grew by a healthy 11.7 percent in 2010, up from reasonably flat performances in the two previous years. Arrivals from the United States, which constituted 35.3 percent of all arrivals shrank minimally by 1.3 percent, to total 24.9 thousand. The Canadian market grew by a significant 17.6 percent, even though arrivals from this market only account for 3.0 percent of the total. Arrivals from neighbouring Aruba fell away sharply by 43.7 percent, totaling a mere 2.0 thousand, down from 3.7 thousand in 2009.
- ◆ Bonaire's Cruise Industry continued to do well in 2010, continuing on from the post-2005 expansion. Passenger arrivals climbed by 5.9 percent over the previous year, topping off at 225.7 thousand passengers. These cruise guests arrived onboard the 138 ships which docked. Most of the growth occurred in the summer season (up 17.8 percent) which accounted for only 32.1 percent of the total cruise passengers. The performance in the winter season was flat.

TOURISM HIGHLIGHTS FOR 2010

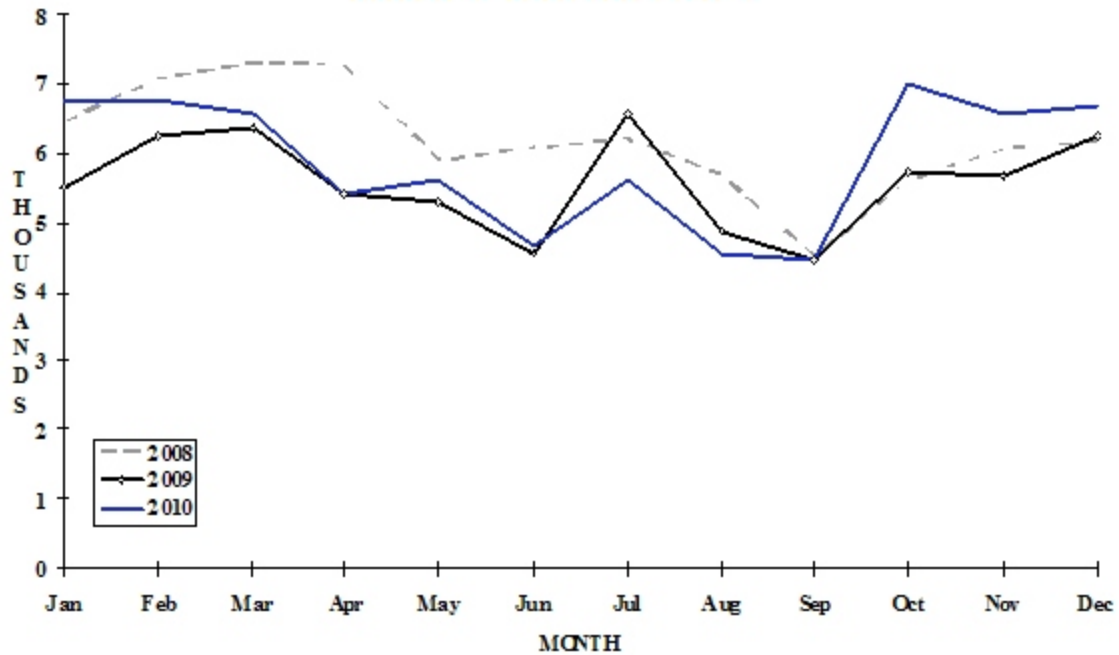
VISITOR ARRIVALS			
Tourist Arrivals ➔	70,539	Cruise Passenger Arrivals	225,666
➔ <i>Winter</i>	35.1%	➔ <i>Winter</i>	67.9%
➔ <i>Summer</i>	64.9%	➔ <i>Summer</i>	32.1%
Same day Visitors	-	Cruise calls	138
VISITOR PROFILE			
Average Length of Stay (<i>nights</i>) ^I	10.7	Tourist Arrivals by Place of Stay ^{VII}	
Tourist Arrivals by Purpose of Visit ^{VI}		➔ <i>Hotels</i>	55.2%
➔ <i>Holiday</i>	97.1%	➔ <i>Guest House/Apartment</i>	31.5%
➔ <i>Business</i>	2.7%	➔ <i>Private/Unregistered</i>	13.0%
➔ <i>Other</i>	0.2%	➔ <i>Other</i>	0.3%
TOURISM AND OTHER RELATED ECONOMIC STATISTICS			
Total Expenditure (<i>US\$ millions</i>) ^{II}	\$121.1	Tourism Budget (<i>US\$ thousands</i>) ^{VI b}	\$888
		Consumer Price Index (% <i>ch</i> 2010/'09)	2.4%
ACCOMMODATION STATISTICS		SOCIO-ECONOMIC STATISTICS	
Rooms ^{II}	1,256	Land Area (<i>square Kilometres</i>)	288
Occupancy Rate ^I	67.1%	Population (<i>thousand mid year 2010</i>)	13.4

BONAIRE

**TOURIST ARRIVALS BY MAIN MARKETS
2010**



MONTHLY TOURIST ARRIVALS



TOURIST ARRIVALS BY COUNTRY OF RESIDENCE *

Country of Residence *	2006	2007	2008	2009	2010	% Share 2010
U.S.A.**	26670	32085	32267	25236	24910	35.3
Canada	1511	1716	2024	1799	2115	3.0
Aruba	2592	3159	3928	3689	2076	2.9
Holland	19246	23692	23732	23093	25802	36.6
Germany	1709	1648	1646	2254	1838	2.6
Venezuela	1642	2538	2186	2643	2125	3.0
Rest World ***	10182	9471	8559	8284	11673	16.5
TOTAL	63552	74309	74342	66998	70539	100.0

* Excluding arrivals from Netherlands Antilles

** Including Puerto Rico

*** Including arrivals from other European countries: 7247 in 2006, 6087 in 2007, 5390 in 2008, 4887 in 2009 and 4769 in 2010.

MONTHLY TOURIST ARRIVALS

Months	2006	2007	2008	2009	2010	% Change 2010/09
January	4963	5739	6453	5488	6726	22.6
February	6085	6920	7089	6266	6766	8.0
March	5454	7164	7292	6365	6589	3.5
April	6659	5819	7261	5409	5412	0.1
May	4889	5599	5898	5301	5591	5.5
June	4379	5724	6075	4566	4671	2.3
July	5988	6388	6223	6594	5587	-15.3
August	4366	5559	5687	4885	4544	-7.0
September	4249	5070	4510	4442	4433	-0.2
October	4880	6735	5612	5740	6991	21.8
November	5288	6672	6056	5680	6558	15.5
December	6352	6920	6186	6262	6671	6.5
TOTAL	63552	74309	74342	66998	70539	5.3

CRUISE PASSENGERS

Months						% Change	
	2006	2007	2008	2009	2010	2010/09	
January	7685	10425	19614	39356	44650	13.5	
February	11598	11430	31319	37696	34262	-9.1	
March	7580	10269	27683	36732	36707	-0.1	
April	4761	12122	16997	31071	29541	-4.9	
May	693	4129	0	3203	8856	176.5	
June	0	681	0	0	0	-	
July	464	395	0	0	0	-	
August	732	947	0	0	0	-	
September	753	886	0	302	1502	397.4	
October	819	3604	3136	9358	1351	-85.6	
November	12658	19474	25375	24489	32136	31.2	
December	14101	23273	51578	30984	36661	18.3	
TOTAL	14790	97635	175702	213191	225666	5.9	
Cruise calls	78	97	92	117	138		

TOURIST ACCOMMODATION (Rooms)

Type of Accommodation	2005	2006	2007	2008	2009
Hotels	n.a	n.a	n.a	n.a	n.a
Apartments	n.a	n.a	n.a	n.a	n.a
Condominiums	n.a	n.a	n.a	n.a	n.a
Other	n.a	n.a	n.a	n.a	n.a
TOTAL	n.a	1157	1256	1256	n.a

Source: Bonaire Government Tourist Bureau